



**Government of Malawi
National Statistical Office**

INTEGRATED HOUSEHOLD SURVEY 1997-98

STATISTICAL ABSTRACT

June, 2000

**NATIONAL STATISTICAL OFFICE
P.O. BOX 333,
ZOMBA,
MALAWI**

Website: <http://nso.malawi.net>

1.0 Introduction

The National Statistical Office conducted the first Integrated Household Survey (IHS) from November 1997 to October 1998. A total of 12,960 households were interviewed. The IHS had five main objectives:

- To provide a complete and integrated data set to arrive at a better understanding of households in poverty
- To serve a much broader set of applications on policy issues regarding:
 - Household behaviour and welfare
 - Distribution of income and expenditure
 - Employment and Migration
 - Health, fertility and nutrition
 - Education
 - Access to Social facilities
- To provide fresh information on expenditure patterns of households. This information could be useful in the revision of commodity weights for the consumer price indices.
- To provide estimates of final household consumption expenditure to serve as a basis for deriving direct estimates in the National Accounts of final household consumption expenditure.
- To rationalise data collection, since household surveys were carried out in an uncoordinated manner in the past. The IHS addresses the interests of various users in one integrated data set with inter-linked modules.

2.0 Data Coverage

2.1 The survey is comprehensive in its coverage because welfare has many dimensions that need to be investigated. These include expenditure, income, assets, education, health and employment. In addition each aspect of household welfare and behaviour cannot be properly understood on its own, but has to be placed within the context of the whole. Data were collected at the household level since the household is an important social and economic unit within which many decisions concerning the activities and well being of household members are taken. The survey therefore covered both production and consumption of the household since the decision to do one generally affects the other.

2.2 The survey had 11 core household modules as follows:

- *Household Level Data*
 - Household roster
 - Vital statistics
 - Fertility and mortality
 - Nutrition and anthropometrics
 - Education
 - Health
 - Current expenditure
 - Crop production and sales
 - Livestock and poultry ownership
 - Non-farm activities and income
 - Assets
 - Employment and Migration
 - Access to social facilities

3.0 Survey Organization

3.1 Publicity

Prior to and during the survey local leaders in both the urban and rural areas of the country were approached so that they could advise people within their areas to cooperate with the survey personnel. In addition the local news media were also used to secure the cooperation of the public. This exercise was done at the beginning and in the course of the survey.

3.2 Staffing

A total of 60 enumerators were employed to collect the information during the survey and each enumerator was provided with a pedal cycle. Each enumerator collected information from selected households for a period of 12 months.

3.3 Supervision

For effective supervision, four supervisory centres, which include the NSO Regional Offices and NSO headquarters, were established. Each centre had a resident supervisor

drawn from the permanent staff of NSO. Supervisory rounds were made twice every week by the resident supervisors and once every quarter by headquarters supervisors.

3.4 Data Collection.

Data were collected using two main forms (Refer appendices). These forms are described in more detail below;

(a) FORM IHS-2: Household Characteristics, Income and Expenditure

This form collected data on almost all the modules of the Integrated Household Survey (37 modules). The data collected included the household roster, vital statistics, fertility and mortality, nutrition and anthropometrics, education, health, household expenditure, crop production and sales, livestock and poultry ownership, non-farm activities and income, assets, employment and migration and access to facilities.

(b) Form IHS- 3: Diary of Expenditure.

Data on daily expenditure was captured using this type of form. Households were asked to maintain the diary for a period of 28 days.

4.0 Sampling Methodology

4.1 Coverage

The survey covered households from both the urban and rural areas of the country. The sample coverage of 12,960 households was designed such that it would give an overall relative standard error of 15 percent. These households were chosen from 29 Survey Districts (see Table A below). Data were collected in monthly rounds of 60 enumeration areas / clusters over a period of 12 months to account for seasonal effects during the year. There were 720 Enumeration Areas/Clusters (EAs) with 20 households being selected from each rural EA and 10 households from each urban EA. The sampling was designed to ensure that at least 240 households were interviewed in each survey district to provide an acceptable level of accuracy for each variable.

Table A: Distribution of Sample Households by Region.

SURVEY DISTRICT	NUMBER OF EAs	NUMBER OF HOUSEHOLDS
Malawi	720	12960
Southern Region (Rural)	288	5760
Nsanje	12	240
Chikwawa	24	480
Mwanza	12	240
Blantyre Rural	24	480
Zomba Rural	36	720
Thyolo	36	720
Mulanje	36	720
Phalombe	12	240
Machinga	36	720
Mangochi	36	720
Chiradzulu	24	480
Southern Region (Urban)	84	840
Blantyre City	60	600
Zomba Manucipality	24	240
Central Region (Rural)	216	4320
Ntcheu	24	480
Dedza	24	480
Salima	12	240
Lilongwe Rural	60	1200
Mchinji	24	480
Kasungu	24	480
Dowa	24	480
Ntchisi	12	240
Nkhota-kota	12	240
Central Region(Urban)		
Lilongwe City	36	360
Northern Region(Rural)	72	1440
Mzimba	24	480
Nkhata-Bay	12	240
Rumphi	12	240
Karonga	12	240
Chitipa	12	240
Northern Regiopn (Urban)		
Mzuzu City	24	240

Sampling Procedure

The survey households were chosen following a multi-stage clustered random sampling approach. The 29 survey districts were grouped into 4 urban and 25 rural districts. All the districts were included in the survey. Separate procedures were followed in urban and rural areas.

URBAN AREAS

First Stage: In the four major urban areas of the country: Blantyre, Lilongwe, Mzuzu and Zomba, Enumeration Areas (EAs) served as the Primary Sampling Units at the first stage. These EAs were selected using the probability proportional to size (population) method.

Second Stage: In the second stage, 10 households were selected from each EA using simple random sampling.

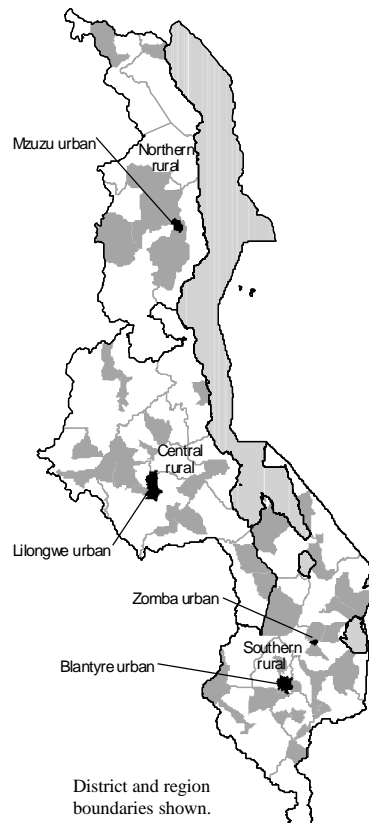
RURAL AREAS

First Stage: In the first stage, Traditional Authorities (TAs) were selected from each district using the probability proportional to size method.

Second Stage: In the second stage, Enumeration Areas (EAs) were selected from each TA selected in the first stage using the probability proportional to size method.

Third Stage: In the third stage, 20 households were selected from each EA using simple random sampling.

Map of Malawi showing Sampled Traditional Authorities:



4.3 Duration

The survey was conducted for a period of 12 months starting from November 1997. It is anticipated that it will be repeated every three years.

4.4 Data Processing

Data entry programs were written in IMPS (Integrated Microcomputer Processing System) and data from the questionnaires was captured onto computers initially at NSO's regional centres, and later at NSO headquarters in Zomba. The output from IMPS was in ASCII format, which had to be translated to SPSS. The data was then cleaned in and tabulated in SPSS and STATA, a process which was largely completed by end May 2000.

5.0 SUMMARY OF RESULTS

5.1.0 Demographic Characteristics of Households

The age and sex distribution of the sample population in the IHS is shown in Table A. The table depicts that 15 percent of the population were under five children, 3.2 percent were aged 65 years and over. This indicates a wide based population pyramid.

Table A -Percentage Distribution of Sample Population Across Age Groups by Sex

Age Category	Malawi			Rural			Urban		
	Males	Females	Total	Males	Females	Total	Males	Females	Total
0 - 4	15.1	15.1	15.1	13.5	13.4	13.4	1.6	1.7	1.6
5 - 9	15.1	14.7	14.9	13.4	13.0	13.2	1.7	1.7	1.7
10 - 14	13.9	13.8	13.9	12.1	11.9	12.0	1.8	1.9	1.9
15 - 19	11.7	11.3	11.5	10.1	9.6	9.8	1.6	1.7	1.7
20 - 24	8.8	10.5	9.7	7.2	8.9	8.1	1.6	1.7	1.6
25 - 29	8.3	8.1	8.2	6.7	6.9	6.8	1.7	1.3	1.5
30 - 34	6.3	5.6	6.0	5.2	4.8	5.0	1.1	.9	1.0
35 - 39	4.8	4.8	4.8	4.0	4.2	4.1	.8	.6	.7
40 - 44	3.5	3.6	3.5	2.9	3.1	3.0	.6	.4	.5
45 - 49	3.4	3.7	3.6	2.9	3.3	3.1	.5	.4	.4
50 - 54	2.4	2.4	2.4	2.1	2.2	2.2	.3	.2	.3
55 - 59	2.0	1.7	1.8	1.8	1.6	1.7	.2	.1	.1
60 - 64	1.3	1.5	1.4	1.2	1.4	1.3	.1	.1	.1
65 +	3.2	3.1	3.2	3.1	3.0	3.0	.1	.1	.1

Source: Malawi Integrated Household Survey, 1997-98

The sex distribution of the population shows that 49.0 percent of the population were male and 51 percent of the population were female. In the rural population 48.6 percent were male and 51.4 percent were female. The sex distribution in the urban is 51 percent for male and females

49 percent. This is shown in Table B.

**Table B Percentage Distribution of Sample Population Across
Regions by Sex**

	Total	Males	Females
Malawi	100.0	48.9	51.1
Southern Region	100.0	47.8	52.2
Central Region	100.0	49.4	50.6
Northern Region	100.0	51.1	48.9
Rural	100.0	48.6	51.4
Urban	100.0	50.8	49.2

Source: Malawi Integrated Household Survey, 1997-98

5.1.1 Mean Household Size By Region

The IHS estimated a mean household size of 4.3 persons per household across the country. This is in line with the mean household size from the 1998 Preliminary Population Census results. The central region had the higher mean household size of 4.5 persons; the Southern and Northern regions have the same mean size of 4.2 persons per household. This is shown in Table C below. This shows that the mean household size has declined compared to past censuses.

Table C: -Mean Household Size by Region

	All households
Malawi	4.3
Southern Region	4.2
Central Region	4.5
Northern Region	4.2
Rural	4.3
Urban	4.3

Source: Malawi Integrated Household Survey, 1997-98

5.1.2: Mean Age of Household Heads, and Dependency Ratio By Region.

The distribution of household head shows that the mean age for male-headed households was 40 while that for female-headed households was 44. This is shown in table D below.

Table D: Mean Age of Head of Household by Sex and Region

	All	Male households	Female households
Malawi	41.	40.	44.
Southern Region	41.	40.	43.
Central Region	41.	39.	47.
Northern Region	39.	38.	42.
Rural	41.	40.	45.
Urban	36.	36.	37.

Source: Malawi Integrated Household

The IHS estimated a dependency ratio¹ of 1.1 for Malawi; the same applies for the Southern, Central and Rural areas. In the Northern region the Dependency Ratio is 0.9 and in the urban it is 0.8. This is shown in table E below;

Table E -Dependency Ratio by Region

	All households
Malawi	1.1
Southern Region	1.1
Central Region	1.1
Northern Region	.9
Rural	1.1
Urban	.8

Source: Malawi Integrated Household Survey, 1997-98

¹ Dependency Ratio is the ratio of persons aged 0-14 years and 65 years and older over persons aged 15-64 years

5.2.0 NET PRIMARY ENROLMENT RATE

Table F below presents the data on the net primary enrolment rate ² (Children enrolled as a percentage of all children aged 6-13). The table shows that of the total number of children aged between 6-13 years in Malawi, 77.6 percent were in school during the time of the survey. Of the total male children in this age group 77 percent were in school and 79 percent of the girls in the same age were in school.

There are no significant differences in enrolments by regions. The figures are significantly higher in the Northern Region with an enrolment rate of 87 percent. Boys (86 percent), and girls (87 percent). The Central Region had a net enrolment rate of 77 percent, recording (75 percent) for boys and (77 percent) for girls. In the Southern Region net enrolment was 76 percent. Boys (76 percent) and Girls (77.percent).

Table F: Net Enrollment Rate for Children 6-13 Years , by Sex and Region

	Total	Male	Female
Malawi	77.6	77.0	78.5
Southern Region	76.4	75.9	76.9
Central region	76.5	75.4	77.7
Northern Region	86.7	86.0	87.4
Rural	77.0	76.0	78.0
urban	83.4	84.6	82.2

Source: Malawi Integrated Household Survey, 1997-98

Not surprisingly there was a higher enrolment rate in the urban areas (83.4 percent) than rural areas (74.0 percent). In the urban areas more boys were enrolled (85percent) compared to girls (82percent) whilst the rural enrolled 76 percent and 78 percentage points for boys and girls, respectively.

² The distribution of the sampled households and the total number of enumeration areas covered are in the following table.

5.2.1 MEAN DISTANCE AND TIME TAKEN TO THE NEAREST SCHOOL

Table G: below shows that the average distance to the nearest primary school for most Malawians was 3.5 km and the average time to reach such a school is 26.8 minutes.

At regional level the average distance does not vary that much, with the three regions registering 3.4 kilometres (South), 3.5 kilometres (Central), and 3.8 kilometres (North). The average time taken to reach the nearest school also does not vary much. It is longer in the North taking half an hour (30.7minutes), in the Central (26.3 minutes) and lower in the South (26.1 minutes).

Table G: -Distance and Time Taken to School,

	Mean distance to (km.)	Mean travelling time to (minutes)
Malawi	3.5	26.8
Southern Region	3.4	26.1
Central Region	3.5	26.3
Northern Region	3.8	30.7
Rural	3.4	27.5
Urban	3.7	23.0

Source: Malawi Integrated Household Survey, 1997-98

In the rural areas the mean distance is 3.4 kilometres taking an average of 27.5 minutes while in the urban areas the mean distance is 3.7 kilometres taking an average of 23 minutes.

5.3.0: Mean Area Cultivated by Households By Region

Table H shows the average cultivated area by households. The table shows that the average cultivated land size is 0.95 of a hectare per household at national level. At regional level, the Central Region has the largest average cultivated land size of 1.13 hectares per household. The Northern Region has an average cultivated land of 0.92 of a hectare per household. It is further observed that the average land holding size in the rural areas is 0.96 of a hectare, while in the urban areas it is 0.77 of a hectare.

Table H: Mean Area Cultivated (ha) in Last Production Season by Region

	Malawi	Northern Region	Central Region	Southern Region	Rural	Urban
All Households	0.64	0.65	0.99	0.37	0.72	0.16
Households with Cultivated Land	0.95	0.93	1.13	0.72	0.96	0.78

Source: Malawi Integrated Household Survey, 1997-98

5.4.0: Percentage Distribution of income By Source

Table I below shows the distribution of household income by source. It is observed that at the National level the major source of household income is from crop production (about 32 percent). This is followed by salaries and wages (26 percent), non-farm business (16 percent). Transfers account for (12.8 percent), other income and income from sales of livestock (4.9 percent) and the rest account for less than 2 percent..

In the Northern Region, the main source of income is from Transfers (35 percent), followed by salaries and wages (29 percent), non-farm income (12 percent). The least source was from rents and interests (1 percent). In the Central Region, the main source of income is from Crop production (43 percent), followed by salaries and wages (21 percent). The least source in the Centre was from rents and interests and income in kind with less than 2 percent. In the Southern Region the major source of income is Crop production (32 percent), followed by salaries and wages (28 percent), non-farm business (19 percent). The least are rents and interest and other income less than 2 percent.

Table I: Percentage Distribution of Income by Source by region

Source	Malawi	Northern Region	Central Region	Southern Region	Rural	Urban
Crop Production	32.3	7.7	42.7	32.0	38.1	1.7
Sales Livestock & products (net)	4.9	4.0	3.3	6.7	5.7	0.5
Nonfarm income (net)	16.3	11.6	15.6	18.7	15.5	20.6
Salaries and wages	25.5	28.6	21.0	28.4	17.3	68.8
In-kind income	1.9	1.5	1.9	2.1	2.1	0.9
Rents & interests	1.4	1.1	1.4	1.5	1.1	3.0
Transfer income (net)	12.8	35.4	7.7	9.0	15.2	0.1
Other income	4.9	10.1	6.5	1.7	5.0	4.4

The table also shows that in the rural areas the major source of income was from crop production (38 percent) followed by salaries and wages (17 percent), non-farm income and transfer income having 15 percent each. The least is from rents and interests (1 percent).

In the urban areas the major source is from salaries and wages (69 percent) followed by non-farm income (21 percent).

5.5.0: Percentage Distribution of Per Capita Monthly Expenditure

Table J below shows the monthly per capita expenditure pattern of households. The table reveals that a large part of the population is in the middle-income of between K 100 and K600 per capita per month. The Northern Region has 5.9 percent in the high expenditure category, followed by the Southern Region with 3.2 percent and the Central Region 3.2 percent in the high expenditure category. The urban areas have a high proportion in the high expenditure category (20 percent) while the rural areas have 2 percent in this category.

Table J -Percentage Distribution of Households by Monthly Expenditure/Capita Category

	Malawi	Northern Region	Central Region	Southern Region	Rural	Urban
0 to 49.99	5.0	.8	3.9	7.5	5.9	.1
50 to 99.99	11.2	3.9	10.8	14.3	12.9	2.1
100 to 149.99	14.5	9.0	14.2	16.7	16.6	3.3
150 to 199.99	12.3	10.8	13.1	12.1	13.4	6.3
200 to 399.99	30.9	36.3	32.6	27.5	32.0	24.7
400 to 599.99	11.7	18.1	11.1	9.9	10.4	18.7
600 to 999.99	8.4	13.3	8.2	6.9	6.2	20.2
1000 and over	6.0	7.9	6.2	5.2	2.5	24.6
Total	100.0	100.0	100.0	100.0	100.0	100.0

Source: Malawi Integrated Household Survey, 1997-98

5.5.1: Mean Annual Per Capita Expenditure by Region and Sex of Household Head

Table K below shows that male-headed household have a higher per-capita expenditure of K4, 968 per annum compared to female-headed household with a mean per-capita expenditure of K4, 327 per annum. The north however shows a notable higher per-capita expenditure of K5, 484 followed by the centre with K4, 571, then the south with K4, 571. This shows that consumer prices are higher in the north. The rural areas had a lower mean annual expenditure of K3, 411 compared to K 12,238 in the urban areas.

The Mean per-capita expenditure for Malawi across sex of head of Household is K4, 817 per annum. This is not far from the current price GDP per capita during 1998, which was estimated at K5, 620 using Value Added.³

Table K -Mean Annual Per Capita Expenditures by Sex of Head of Household

	Malawi	Northern Region	Central Region	Southern Region	Rural	Urban
Male	4,968	5,571	4,756	4,941	3,483	12,087
Female	4,327	5,173	5,092	3,621	3,192	12,963
Total	4,817	5,484	4,821	4,571	3,411	12,238

Source: Malawi Integrated Household Survey, 1997-98

³ The current GDP estimates are based on Production or Value added Approach of Enterprises and Institutional Units.

5.6.0: Industry Pattern

Table L below shows that Agriculture accounts for 68.7 percent of all activities by classified by Industry. This is followed by Personal and Community services (10.8 percent.). The least of households are engaged in Mining and Quarrying accounting for less than 1 percent.

Table L:- Distribution of Households by major Industry group by Region

	Malawi	Southern Region	Central Region	Northern Region	Rural	Urban
Agriculture, forestry and fishing	68.7	54.9	81.2	48.3	78.7	7.0
Mining and quarrying	.4	.9	.1	.2	.4	.6
Manufacturing	4.6	9.0	1.9	4.1	3.5	11.5
Electricity and water	1.0	1.3	.8	.6	.6	3.3
Construction	2.9	4.3	1.6	4.9	2.1	7.5
Wholesale/retail trade and hotels/restaurants	6.3	9.5	3.9	8.9	4.8	16.0
Transport	1.1	1.5	.6	2.3	.5	4.3
Business and financial services	4.2	6.0	2.3	8.5	2.2	16.5
Personal and community services	10.8	12.6	7.6	22.2	7.2	33.2

Source: Malawi Integrated Household Survey, 1997-98

5.7 Household Economic Activities

Table M below reveals that at the National level, 32 percent of the population are Students, 24.2 percent were home workers, 23.3 were self-employed, and 8.8 Percent were engaged in paid employment less than 1 percent was an employer (0.3 percent).

Table M: Percentage Distribution of Population By Economic Activity Status By region

	Malawi	Southern Region	Central Region	Northern Region	Rural	Urban
Employee	8.8	8.9	7.4	12.3	6.4	26.7
Family business worker	3.1	3.8	2.9	.9	3.0	3.4
Self-employed	23.3	16.8	36.5	11.6	25.5	7.3
Employer	.3	.3	.4	.0	.3	.4
Seeking work	1.0	1.3	.6	.9	.9	1.9
Home worker	24.2	25.4	17.4	38.7	25.0	18.8
Student	31.9	32.9	30.2	32.6	31.3	35.9
Dependent	5.7	7.8	4.0	2.4	6.0	4.0
Other	1.6	2.7	.5	.6	1.6	1.6

Source: Malawi Integrated Household Survey, 1997-98

STATISTICAL TABLES

Table 1 -Percentage Distribution of Population Across Age Groups By Sex By Region

		Malawi											
					Southern Region			Central Region			Northern Region		
		Total	Males	Females	Total	Males	Females	Total	Males	Females	Total	Males	Females
Age	0 - 4	15.1	15.1	15.1	6.8	6.9	6.8	6.3	6.2	6.3	2.0	2.0	1.9
Category	5 - 9	14.9	15.1	14.7	7.2	7.2	7.1	5.8	5.9	5.7	1.9	2.1	1.8
	10 - 14	13.9	13.9	13.8	6.9	6.9	7.0	5.3	5.3	5.2	1.7	1.7	1.6
	15 - 19	11.5	11.7	11.3	5.8	5.8	5.7	4.2	4.3	4.0	1.6	1.6	1.6
	20 - 24	9.7	8.8	10.5	4.4	3.9	4.9	3.9	3.6	4.2	1.4	1.3	1.4
	25 - 29	8.2	8.3	8.1	3.9	3.6	4.1	3.1	3.4	2.9	1.2	1.3	1.2
	30 - 34	6.0	6.3	5.6	2.8	2.8	2.8	2.2	2.4	2.0	1.0	1.2	.8
	35 - 39	4.8	4.8	4.8	2.4	2.2	2.5	1.8	1.9	1.7	.6	.7	.6
	40 - 44	3.5	3.5	3.6	1.8	1.8	1.9	1.3	1.2	1.3	.5	.5	.4
	45 - 49	3.6	3.4	3.7	1.7	1.6	1.8	1.4	1.4	1.5	.4	.4	.4
	50 - 54	2.4	2.4	2.4	1.2	1.2	1.2	.9	.9	.9	.3	.3	.3
	55 - 59	1.8	2.0	1.7	.8	.9	.8	.8	.8	.7	.2	.3	.2
	60 - 64	1.4	1.3	1.5	.7	.6	.7	.5	.4	.6	.2	.2	.1
	65 +	3.2	3.2	3.1	1.5	1.5	1.6	1.3	1.4	1.3	.3	.4	.2

Source: Malawi Integrated Household Survey, 1997-98

Table 2-Distribution of Households By Number of Adults in Household, by Region

		Malawi	Northern Region	Central Region	Southern Region	Rural	Urban
Number of adults 16yrs+	1	20.4	24.7	16.5	22.3	20.7	18.5
	2	51.1	48.5	54.2	49.5	51.6	47.7
	3	15.3	12.7	15.9	15.6	15.4	15.2
	4	7.7	7.4	8.0	7.6	7.4	9.9
	5	3.0	2.9	3.3	2.9	2.7	4.9
	6	1.4	1.7	1.3	1.3	1.3	2.0
	7	.6	1.4	.4	.6	.5	1.3
	8	.2	.3	.3	.2	.2	.4
	9	.1	.4	.0	.1	.1	.1
	10	.0	.1	.0		.0	
All		100.0	100.0	100.0	100.0	100.0	100.0

Note: There is one household headed by a 14-year-old and 2 by 15-year-olds.

Source: Malawi Integrated Household Survey, 1997-98.

**Table 3 - Net Enrollment Rates for Children 6-13 Years,
by Sex , by Region**

	Total	Male	Female
Malawi	77.76	77.03	78.48
Southern Region	76.40	75.89	76.90
Central Region	76.52	75.35	77.69
Northern Region	86.69	86.03	87.35
Rural	76.96	75.98	77.95
Urban	83.42	84.63	82.22

Source: Malawi Integrated Household Survey, 1997-98

**Table 4 -Ratio of Boys to Girls In Primary And Secondary Schools
By Region**

	Primary		Secondary	
	Boys	Girls	Boys	Girls
Malawi	49.2	50.8	41.0	59.0
Northern Region	51.5	48.5	22.2	77.8
Central Region	49.0	51.0	30.4	69.6
Southern Region	48.8	51.2	55.2	44.8
Rural	49.1	50.9	38.9	61.1
Urban	50.0	50.0	41.9	58.1

Source: Malawi Integrated Household Survey, 1997-98.

Table 5-Highest Educational Attainment of Persons 5 Years and Older Who Are Currently In School, by Region and Sex

		Std I-IV	Std V-VIII	Junior Certificate	Malawi School Certificate	University	Other	Not reported
Malawi	Male	58.9	29.7	10.5	.1	.2	.3	.3
	Female	64.0	27.4	7.5	.1	.1	.4	.4
Northern Region	Male	48.0	36.8	14.5	.1	.1	.5	
	Female	54.4	34.7	9.8			.4	.6
Central Region	Male	64.5	26.3	8.4	.1	.1	.4	.3
	Female	67.7	24.9	6.7	.1	.0	.4	.1
Southern Region	Male	58.0	30.0	10.8	.2	.3	.2	.4
	Female	63.8	27.4	7.5	.2	.2	.3	.5
Rural	Male	62.2	29.5	7.7	.0	.1	.1	.3
	Female	67.9	26.6	4.8	.1	.1	.2	.4
Urban	Male	40.1	30.6	26.0	.8	.7	1.3	.4
	Female	43.1	31.8	22.4	.7	.4	1.3	.4

Source: Malawi Integrated Household Survey, 1997-98.

Table 6-Highest Educational Attainment of Persons 5 Years and Older Who Are Currently Not In School or No Longer in School, by Region and Sex

		No education	Std I-IV	Std V-VIII	Junior Certificate	Malawi School Certificate	University	Other
Malawi	Male	24.1	23.2	35.8	6.7	7.8	1.5	.9
	Female	42.0	24.7	25.8	3.4	2.9	.6	.6
Northern Region	Male	9.4	12.9	49.1	13.1	12.9	1.5	1.1
	Female	20.0	18.0	49.3	7.0	4.5	.2	1.1
Central Region	Male	26.9	25.6	34.3	4.6	6.5	1.3	.8
	Female	44.3	27.1	21.7	2.4	3.2	.6	.7
Southern Region	Male	26.0	24.1	33.0	6.7	7.6	1.8	.8
	Female	45.9	24.5	22.9	3.3	2.3	.6	.4
Rural	Male	27.1	25.9	36.7	5.3	4.4	.3	.4
	Female	46.0	26.0	24.5	1.9	1.1	.1	.3
Urban	Male	6.1	6.9	30.1	15.3	28.8	8.9	3.8
	Female	11.3	14.7	35.5	14.6	17.0	4.2	2.6

Table 7 -Percent Distribution of Population by Sex and Type of School Attended, by Region

	Govt	Private	Mission	Other
Malawi	85.2	2.7	11.5	.6
Northern Region	76.8	3.3	18.6	1.2
Central Region	87.9	2.5	9.1	.4
Southern Region	85.6	2.7	11.2	.6
Rural	86.7	.9	11.9	.4
Urban	76.9	12.4	9.2	1.5

Note: Includes those reporting type of school attended only.
Source: Malawi Integrated Household Survey, 1997-98.

Table 8 -Distance and Time Taken to School, by District

	Mean distance to school (km.)	Mean travelling time to school (minutes)
Malawi	3.5	26.8
Southern Region	3.4	26.1
Nsanje	2.9	27.7
Chikwawa	3.2	24.9
Mwanza	4.1	26.0
Blantyre Rural	2.7	20.5
Blantyre City	3.6	21.9
Zomba Rural	3.3	31.4
Zomba Municipality	3.8	23.6
Thyolo	4.1	28.3
Mulanje	3.1	39.1
Phalombe	2.2	18.9
Machinga	3.7	22.4
Mangochi	3.5	25.7
Chiradzulu	3.7	24.2
Central Region	3.5	26.3
Ntcheu	3.4	22.9
Dedza	3.9	33.2
Salima	4.0	33.2
Lilongwe Rural	3.3	23.4
Lilongwe City	3.4	24.4
Mchinji	3.7	29.5
Kasungu	3.1	24.1
Dowa	3.5	29.9
Ntchisi	4.1	23.6
Nkhota-kota	3.3	23.0
Northern Region	3.8	30.7
Mzimba	3.8	27.5
Mzuzu City	4.0	23.4
Nkhata-Bay	3.4	38.7
Rumphi	3.8	33.4
Karonga	3.2	32.6
Chitipa	4.3	38.4
Rural	3.4	27.5
Urban	3.7	23.0

Source: Malawi Integrated Household Survey, 1997-98

Table 9 -Prevalence of Stunting and Wasting Among Children by Region

	Underweight		Stunting		Wasting	
	Greater than/equal to -2.0	Less than -2.0	Greater than/equal to -2.0	Less than -2.0	Greater than/equal to -2.0	Less than -2.0
Malawi	84.5	15.5	50.3	49.7	94.4	5.6
6-11 mos	91.9	8.1	56.0	44.0	96.1	3.9
12-23 mos.	83.6	16.4	45.7	54.3	92.9	7.1
24-35 mos.	80.8	19.2	51.8	48.2	94.5	5.5
36-47 mos.	83.0	17.0	52.9	47.1	94.1	5.9
48-59 mos.	87.0	13.0	48.5	51.5	95.3	4.7
Northern Region	87.1	12.9	50.8	49.2	91.1	8.9
Central Region	84.3	15.7	49.9	50.1	95.4	4.6
Southern Region	84.0	16.0	52.2	47.8	94.2	5.8
Rural	83.8	16.2	50.3	49.7	94.5	5.5
Urban	91.4	8.6	57.1	42.9	93.1	6.9

Source: Malawi Integrated Household Survey, 1997-98
 Percentages of children below 2 std devs from the WHO/FAO norm
 Children between the ages of 6 months and 5 years

Table 10-Mean Height-for-Age Z-Scores of Preschoolers by Highest Educational Attainment of Any Adult Female in the Household, by Region

		Educational attainment							Not reported
		No education	Std I-IV	Std V-VIII	Junior Certificate	Malawi School Certificate	University	Other	
Malawi	Mean	-1.83	-1.84	-1.68	-1.48	-1.08	-.59	-1.15	.
	N	1379	1083	1450	215	87	17	18	0
Northern Region	Mean	-1.20	-1.95	-1.78	-1.86	-.94	2.00	-1.76	.
	N	52	72	332	56	24	1	8	0
Central Region	Mean	-1.88	-1.87	-1.73	-1.55	-1.16	-1.37	-.66	.
	N	704	606	617	63	29	5	7	
Southern Region	Mean	-1.84	-1.78	-1.56	-1.20	-1.11	-.47	-.68	.
	N	623	405	501	96	34	11	3	0
Rural	Mean	-1.85	-1.84	-1.71	-1.38	-1.15	-.87	-.31	.
	N	1347	1034	1281	141	52	7	11	0
Urban	Mean	-1.30	-1.75	-1.50	-1.66	-.98	-.39	-2.48	.
	N	32	49	169	74	35	10	7	

Source: Malawi Integrated Household Survey, 1997-98

Table 11 -Mean Weight-for-Age Z-Scores of Preschoolers by Highest Educational Attainment of Any Adult Female in the Household, by Region

		Educational attainment							
		No education	Std I-IV	Std V-VIII	Junior Certificate	Malawi School Certificate	University	Other	Not reported
Malawi	Mean	-.84	-.78	-.56	-.20	.29	-.14	-.29	.
	N	1654	1322	1850	298	132	25	24	0
Northern Region	Mean	-.39	-.92	-.39	-.40	.24	-.14	.26	.
	N	66	110	476	85	30	1	10	0
Central Region	Mean	-.83	-.75	-.68	-.18	.55	-.22	-1.07	.
	N	805	689	732	80	54	9	9	
Southern Region	Mean	-.89	-.79	-.54	-.09	.02	-.09	.03	.
	N	783	523	642	133	48	15	5	0
Rural	Mean	-.85	-.82	-.62	-.44	.12	-1.06	-.55	.
	N	1615	1252	1601	184	63	10	13	0
Urban	Mean	-.54	-.21	-.13	.18	.43	.48	.02	.
	N	39	70	249	114	69	15	11	

Source: Malawi Integrated Household Survey, 1997-98

Table 12 -Mean Weight-for-Height Z-Scores of Preschoolers by Highest Educational Attainment of Any Adult Female in the Household, by Region

		Educational attainment							
		No education	Std I-IV	Std V-VIII	Junior Certificate	Malawi School Certificate	University	Other	Not reported
Malawi	Mean	.63	.76	.84	.88	1.14	-.45	.69	.
	N	1482	1182	1577	224	88	20	21	0
Northern Region	Mean	.47	1.18	.96	.70	1.22	-1.58	1.90	.
	N	57	89	378	54	23	1	8	0
Central Region	Mean	.69	.70	.82	.96	1.56	-.88	-.57	.
	N	767	651	679	65	29	6	9	
Southern Region	Mean	.59	.77	.77	.94	.74	-.17	1.09	.
	N	658	442	520	105	36	13	4	0
Rural	Mean	.64	.74	.79	.61	1.25	-.61	-.20	.
	N	1447	1129	1404	153	54	9	13	0
Urban	Mean	.57	1.31	1.21	1.48	.95	-.32	2.14	.
	N	35	53	173	71	34	11	8	

Source: Malawi Integrated Household Survey, 1997-98.

Table 13 -Women of Childbearing Age as a Percentage of All Women

Malawi	44.8
Northern Region	48.1
Central Region	42.8
Southern Region	45.6
Rural	43.7
Urban	52.7

Source: Malawi Integrated Household Survey, 1997-98

Table 14- Crude Birth Rate and Crude Death Rate by Region

	Crude Birth Rate	Crude Death Rate
Malawi	33.09	32.14
Northern Region	30.45	22.84
Central Region	36.56	22.72
Southern Region	31.07	42.30
Rural	34.16	33.75
Urban	26.48	22.13

Source: Malawi Integrated Household Survey, 1997-98

**Table 15 -Percentage Ill or Injured During the 2-Week Recall Period by Sex,
by District**

		All	Male	Female
Malawi		26.4	24.6	28.1
Southern Region	Nsanje	32.1	33.2	31.1
	Chikwawa	32.1	28.5	35.7
	Mwanza	25.4	20.6	30.1
	Blantyre Rural	21.0	19.7	22.0
	Blantyre City	18.9	16.1	21.9
	Zomba Rural	24.5	24.1	24.9
	Zomba City	22.0	19.8	24.0
	Thyolo	28.5	24.4	32.3
	Mulanje	37.5	32.8	41.1
	Phalombe	12.5	11.9	13.2
	Machinga	11.7	9.8	13.6
	Mangochi	25.4	23.6	27.0
	Chiradzulu	23.9	22.8	24.8
Central Region	Ntcheu	19.7	18.0	21.2
	Dedza	39.8	36.8	42.4
	Salima	47.0	44.8	49.4
	Lilongwe Rural	29.9	27.8	32.0
	Lilongwe City	10.1	8.5	11.7
	Mchinji	27.5	25.8	29.4
	Kasungu	30.1	28.0	32.3
	Dowa	33.2	35.4	31.1
	Ntchisi	16.0	13.5	18.3
	Nkhota-kota	14.8	12.6	17.1
Northern Region	Mzimba	33.9	32.5	35.3
	Mzuzu City	13.8	13.2	14.3
	Nkhata-Bay	28.5	27.9	29.2
	Rumphi	29.0	24.0	34.7
	Karonga	24.4	25.1	23.6
	Chitipa	26.1	27.3	24.8
Rural		27.9	26.2	29.4
Urban		16.6	14.6	18.7

Source: Malawi Integrated Household Survey, 1997-98

Table 16 -Mean Number of Days Ill or Injured During 2-week Recall Period by, Sex, by District

	All	All individuals		Sick or injured individuals	
		Male	Female	Male	Female
Malawi	1.60	1.48	1.71	6.04	6.10
Southern Region					
Nsanje	1.95	1.99	1.90	6.00	6.12
Chikwawa	1.48	1.31	1.65	4.65	4.69
Mwanza	.92	.77	1.06	4.23	3.73
Blantyre Rural	1.32	1.22	1.40	6.16	6.41
Blantyre City	1.06	.83	1.30	5.22	5.94
Zomba Rural	1.43	1.40	1.46	5.79	5.87
Zomba City	1.32	1.12	1.51	5.69	6.28
Thyolo	1.75	1.51	1.97	6.24	6.12
Mulanje	2.70	2.38	2.94	7.27	7.20
Phalombe	.73	.67	.80	5.82	6.38
Machinga	.49	.37	.62	3.76	4.53
Mangochi	1.81	1.66	1.94	7.02	7.21
Chiradzulu	1.72	1.62	1.80	7.12	7.27
Central Region					
Ntcheu	1.22	1.07	1.36	5.94	6.45
Dedza	2.41	2.24	2.56	6.08	6.03
Salima	2.75	2.69	2.82	6.00	5.72
Lilongwe Rural	1.59	1.43	1.75	5.14	5.48
Lilongwe City	.55	.45	.65	5.40	5.55
Mchinji	1.75	1.69	1.82	6.53	6.19
Kasungu	1.84	1.77	1.91	6.30	5.91
Dowa	1.97	2.16	1.81	6.10	5.80
Ntchisi	1.09	.91	1.25	6.73	6.81
Nkhota-kota	.72	.60	.84	4.83	5.09
Northern Region					
Mzimba	2.08	1.98	2.16	6.10	6.13
Mzuzu City	.65	.65	.66	5.03	4.66
Nkhata-Bay	1.56	1.53	1.60	5.50	5.49
Rumphi	1.59	1.39	1.82	5.90	5.40
Karonga	1.56	1.61	1.52	6.41	6.49
Chitipa	1.87	1.99	1.75	7.27	7.04
Rural	1.70	1.60	1.80	6.11	6.13
Urban	.92	.76	1.08	5.31	5.79

Source: Malawi Integrated Household Survey, 1997-98

**Table 17-Percent Who Went for Medical Consultation in the Past 2 Weeks
and Reason, by District**

	% who had medical consultation	Reason for consultation				
		Checkup	Vaccination	Pre-natal Care	Post-natal Care	Other
Malawi	4.18	44.07	31.51	10.06	9.38	4.98
Southern Region	5.00	51.62	25.85	9.51	6.09	6.93
Nsanje	.58	25.00	50.00			25.00
Chikwawa	10.84	58.18	13.64	11.82	10.00	6.36
Mwanza	6.36	22.73	40.91	36.36		
Blantyre Rural	1.16	4.55	13.64	13.64	59.09	9.09
Blantyre City	6.24	63.87	23.23	8.39	3.87	.65
Zomba Rural	5.70	54.22	32.53	7.23	1.81	4.22
Zomba City	.31		33.33	33.33	33.33	
Thyolo	6.07	4.00	35.00	7.00	6.00	48.00
Mulanje	9.78	74.88	17.73	4.43	1.48	1.48
Phalombe	5.47	57.14	5.36	25.00	8.93	3.57
Machinga	2.68	59.38	18.75	18.75	3.13	
Mangochi	6.47	44.72	39.70	6.53	8.54	.50
Chiradzulu	.55	27.27	9.09	36.36		27.27
Central Region	3.60	34.28	42.61	11.95	8.49	2.67
Ntcheu	5.62	37.74	56.60	3.77		1.89
Dedza	1.69	38.24		11.76	44.12	5.88
Salima	3.10	11.76	5.88	26.47	50.00	5.88
Lilongwe Rural	1.35	27.78	35.19	25.93	9.26	1.85
Lilongwe City	2.42	74.19			19.35	6.45
Mchinji	5.92	86.36	3.64	5.45	2.73	1.82
Kasungu	4.13	2.97	88.12	5.94	1.98	.99
Dowa	6.77	4.73	82.43	5.41	4.05	3.38
Ntchisi	4.16	6.45	12.90	80.65		
Nkhota-kota	3.65	90.00	2.50	5.00		2.50
Northern Region	2.89	32.54	26.04	6.51	33.73	1.18
Mzimba	1.14	40.00	15.00	25.00	20.00	
Mzuzu City	2.63	82.76	13.79		3.45	
Nkhata-Bay	7.27	7.69	1.54	9.23	80.00	1.54
Rumphi	4.05	92.31	7.69			
Karonga	5.21	14.29	83.33			2.38
Chitipa	.05					
Rural	4.26	41.08	33.17	10.54	9.76	5.45
Urban	3.67	66.97	18.81	6.42	6.42	1.38

Source: Malawi Integrated Household Survey, 1997-98

Table 18 - Mean Area Cultivated (ha) in Last Production Season by District

	All households	Households with cultivated land
Malawi	.63	.95
Southern Region	.36	.72
Nsanje	.87	1.10
Chikwawa	.24	.67
Mwanza	.54	.72
Blantyre Rural	.19	.78
Blantyre City	.07	1.12
Zomba Rural	.67	.70
Zomba City	.42	.75
Thyolo	.23	.50
Mulanje	.56	.76
Phalombe	.10	.68
Machinga	.59	.68
Mangochi	.38	.62
Chiradzulu	.05	.58
Central Region	.97	1.13
Ntcheu	.88	.97
Dedza	1.10	1.13
Salima	1.06	1.09
Lilongwe Rural	.86	.92
Lilongwe City	.11	.70
Mchinji	1.16	1.40
Kasungu	1.11	1.24
Dowa	1.37	1.43
Ntchisi	1.18	1.20
Nkhota-kota	.93	.97
Northern Region	.62	.95
Mzimba	.81	1.12
Mzuzu City	.15	.68
Nkhata-Bay	.53	.74
Rumphi	.72	1.17
Karonga	.56	.89
Chitipa	.82	.91
Rural	.70	.96
Urban	.15	.78

Source: Malawi Integrated Household Survey, 1997-98

Table 19(a) - Mean Area of Cultivated Land (ha), by Tenure and District
(zero landholdings included in the computation of mean areas)

	Total	Freehold land	Leasehold land	Customary land	Rented land
Malawi	.22	.22	.04	.48	.02
Southern Region	.15	.15	.02	.37	.00
Nsanje	.54	.54	.03	.30	.00
Chikwawa	.49	.49	.03	.29	.00
Mwanza	.01	.01	.70	.24	.00
Blantyre Rural	.03	.03	.00	.50	.00
Blantyre City	.14	.14	.02	.03	.00
Zomba Rural	.01	.01	.00	.58	.00
Zomba City	.01	.01	.01	.42	.00
Thyolo	.18	.18	.01	.33	.00
Mulanje	.03	.03	.01	.74	.00
Phalombe	.02	.02	.01	.85	.00
Machinga	.50	.50	.00	.06	.00
Mangochi	.22	.22	.00	.11	.00
Chiradzulu	.00	.00	.00	.38	.00
Central Region	.33	.33	.06	.59	.06
Ntcheu	.79	.79	.04	.09	.00
Dedza	.00	.00	.00	1.02	.06
Salima	.80	.80	.04	.17	.10
Lilongwe Rural	.02	.02	.00	.82	.00
Lilongwe City	.06	.06	.00	.01	.35
Mchinji	.88	.88	.13	.25	.04
Kasungu	.41	.41	.12	.82	.02
Dowa	.61	.61	.17	.52	.06
Ntchisi	.51	.51	.13	.56	.01
Nkhota-kota	.00	.00	.01	.92	.01
Northern Region	.18	.18	.03	.55	.01
Mzimba	.36	.36	.05	.48	.04
Mzuzu City	.05	.05	.02	.07	.00
Nkhata-Bay	.29	.29	.01	.27	.00
Rumphi	.01	.01	.23	1.23	.00
Karonga	.02	.02	.00	.60	.00
Chitipa	.01	.01	.00	1.33	.00
Rural	.24	.24	.04	.53	.01
Urban	.08	.08	.01	.10	.09

Note: Excludes land valued at over 100,000 kwacha/ha.

Source: Malawi Integrated Household Survey, 1997-98

**Table 19(b) - Area and Value of Cultivated Land (ha), by Tenure and District
(zero landholdings excluded in the computation of mean areas)**

	Total	Freehold land	Value of freehold land/ha	Leasehold land	Value of leasehold land/ha	Customary land	Value of customary land/ha	Rented land
Malawi	1.00	1.00	4643.70	1.52	6446.19	.94	5782.40	1.39
Southern Region	.77	.77	5492.63	.84	5340.25	.74	7394.05	.34
Nsanje	.96	.96	1704.01	.83	1364.68	1.33	1111.90	.
Chikwawa	.95	.95	3153.88	.39	2200.36	1.07	3643.66	.
Mwanza	.81	.81	2470.00	1.03	3187.95	.86	2273.52	.
Blantyre Rural	.86	.86	2808.66	.61	5214.44	.72	8180.81	.
Blantyre City	1.29	1.29	18466.56	2.53	39211.25	1.42	28917.71	.
Zomba Rural	.57	.57	4125.14	1.11	3528.57	.65	6597.16	.
Zomba City	.47	.47	5296.78	.47	16000.94	.97	7816.49	.40
Thyolo	.68	.68	9325.67	.42	10215.95	.54	7437.86	.20
Mulanje	1.16	1.16	3966.90	1.21	1152.67	.85	3785.69	.40
Phalombe	.91	.91	1389.38	.54	1794.87	1.08	1710.18	.
Machinga	.67	.67	3481.22	.	.	.75	10576.54	.
Mangochi	.58	.58	6383.00	.38	12491.14	.65	12090.53	.
Chiradzulu41	6277.92	.52	15478.73	.
Central Region	1.24	1.24	3984.98	2.75	6528.11	1.09	4214.54	1.44
Ntcheu	.90	.90	3029.45	4.75	4239.46	.86	2057.09	.
Dedza	.	.	.	1.01	410.02	1.06	2555.37	.64
Salima	1.01	1.01	3631.70	1.78	1129.77	1.81	3016.25	.49
Lilongwe Rural	.78	.78	4523.06	.74	2642.90	.93	3465.51	.61
Lilongwe City	.96	.96	3223.27	.40	9987.03	.89	3490.93	24.70
Mchinji	1.44	1.44	4181.21	5.63	3833.16	2.02	5041.77	.73
Kasungu	1.50	1.50	4773.74	3.06	5215.21	1.36	4709.68	.75
Dowa	1.50	1.50	4316.89	2.45	10001.31	1.27	10423.05	1.07
Ntchisi	1.10	1.10	4430.00	2.47	3135.76	1.27	2664.63	1.82
Nkhota-kota	.	.	.	1.15	9257.93	.98	4850.27	.61
Northern Region	.88	.88	4182.75	.94	9212.39	1.17	4718.52	1.14
Mzimba	.99	.99	3719.42	.86	10233.08	1.34	2599.69	1.42
Mzuzu City	.93	.93	10070.00	.74	14847.44	.85	16977.00	.
Nkhata-Bay	.71	.71	4033.04	.69	6128.89	.73	4075.41	.40
Rumphi	.25	.25	15746.25	1.44	4333.48	1.59	3908.35	.
Karonga	.60	.60	4750.63	.	.	.88	8816.23	.30
Chitipa	.54	.54	1385.94	.	.	1.37	2648.26	.

Note: Excludes land valued at over 100,000 kwacha/ha.

Source: Malawi Integrated Household Survey, 1997-98

**Table 20- Mean Hours Worked Per Week By Respondents, by Industry and District
(zeroes excluded)**

	agriculture, forestry and fishing	mining and quarrying	manufacturing	electricity and water	constructi on	wholesale/retail trade and hotels/res taurants	transport	business and financial services	personal and communit y services
Malawi	35.6	43.1	45.7	42.4	47.7	48.5	53.2	49.0	47.3
Northern Region	47.8	36.5	53.9	61.8	44.1	57.6	60.1	52.6	50.7
Mzimba	51.8	.	44.7	.	53.3	54.1	54.0	54.8	56.9
Mzuzu City	47.2	43.0	52.8	57.8	50.5	59.1	61.5	54.5	50.3
Nkhata-Bay	40.7	30.0	56.5	70.0	32.3	49.9	54.7	84.0	48.9
Rumphi	41.8	54.4
Karonga	68.2	.	28.0	.	31.5	78.0	66.0	43.7	46.5
Chitipa	45.6	.	94.0	.	.	42.0	.	73.5	38.0
Central Region	36.6	40.5	45.9	36.3	48.9	47.5	51.5	48.6	47.4
Ntcheu	27.6	24.0	.	18.3	.	32.5	.	48.0	34.1
Dedza	36.5	.	53.5	.	10.0	51.8	42.0	65.6	58.1
Salima	46.6	.	57.8	56.0	56.1	43.7	21.0	35.0	48.5
Lilongwe Rural	33.2	.	43.2	.	47.9	41.5	56.9	33.0	48.1
Lilongwe City	45.1	48.0	48.2	45.7	53.6	55.2	54.7	48.8	50.8
Mchinji	40.0	.	43.0	42.0	69.3	76.9	60.0	44.3	49.7
Kasungu	44.3	42.0	36.3	27.0	48.9	42.2	56.0	46.1	40.4
Dowa	41.4	42.0	49.5	34.4	31.7	33.1	36.0	58.8	39.5
Ntchisi	35.9	.	28.0	.	.	44.5	.	55.5	32.3
Nkhota-kota	27.1	.	84.0	.	63.0	41.9	.	10.0	31.8
Southern Region	30.5	44.2	44.6	45.7	48.1	46.9	51.4	47.9	45.6
Nsanje	30.6	.	.	.	8.0	42.0	.	20.0	40.5
Chikwawa	25.2	40.0	44.7	36.5	51.8	38.8	49.0	39.8	45.1
Mwanza	51.8	.	21.0	.	.	10.5	.	52.5	27.0
Blantyre Rural	29.5	46.0	45.6	70.0	46.6	48.7	44.0	38.9	45.6
Blantyre City	48.2	45.5	49.6	46.5	46.3	46.5	51.6	50.8	48.8
Zomba Rural	25.4	43.5	43.2	45.0	48.1	38.8	34.3	36.7	45.8
Zomba Municipality	33.8	42.0	49.3	64.8	54.1	49.3	59.5	55.1	48.5
Thyolo	38.3	48.0	43.6	26.0	40.4	47.6	62.3	30.3	42.3
Mulanje	25.4	30.4	51.7	48.0	.	.	28.0	36.5	29.8
Phalombe	37.2	.	.	49.0	37.0	32.5	.	34.3	45.4
Machinga	28.2	84.0	30.2	.	39.8	31.0	.	33.2	36.8
Mangochi	35.5	54.5	45.4	38.3	51.1	55.2	60.5	50.0	39.0
Chiradzulu	46.5	.	40.3	.	52.6	59.7	47.5	54.6	48.1
Rural	35.5	42.4	43.9	36.5	46.5	46.6	50.3	46.5	45.5
Urban	42.1	46.0	49.2	48.8	49.7	52.1	55.5	51.2	49.8

Source: Malawi Integrated Household Survey, 1997-98.

Table 21 - Primary Occupation by District

		professio nal and technical	administr ative and manageri al	clerical	sales	services	agricultural	other	Total
Malawi		9.9	2.3	4.1	8.5	6.7	64.4	4.0	100.0
Northern Region		12.9	3.0	12.7	13.2	13.7	30.7	13.7	100.0
	Mzimba	9.0	6.5	5.0	12.1	12.1	34.2	21.1	100.0
	Mzuzu City	17.0	1.9	14.4	26.5	31.4	5.3	3.4	100.0
	Nkhata-Bay	12.8	2.0	4.0	5.0	5.4	45.0	25.8	100.0
	Rumphi	18.8		77.1			4.2		100.0
	Karonga	8.9	2.4	11.3	16.1	7.3	49.2	4.8	100.0
	Chitipa	11.6	4.7	30.2		4.7	48.8		100.0
Central Region		5.5	1.6	2.3	4.9	4.1	79.6	1.9	100.0
	Ntcheu	1.4			1.4	.5	94.3	2.4	100.0
	Dedza	.7		.6	1.9	1.7	93.7	1.4	100.0
	Salima	8.9	1.9	.4	7.1	6.3	74.3	1.1	100.0
	Lilongwe Rural	7.2	.1	.3	4.9	5.3	81.6	.7	100.0
	Lilongwe City	26.0	17.5	20.3	15.4	15.4	1.4	4.0	100.0
	Mchinji	2.2	.4	.9	3.5	4.1	85.8	3.1	100.0
	Kasungu	6.4	.3	3.3	7.8	4.2	71.2	6.9	100.0
	Dowa	2.7	.9	1.3	1.4	.9	91.1	1.7	100.0
	Ntchisi	.7		.3	1.7	.3	96.6	.3	100.0
	Nkhota-kota	2.1		.9	8.0	1.4	87.4	.2	100.0
Southern Region		15.7	3.2	4.4	12.8	8.8	50.4	4.6	100.0
	Nsanje	7.9		18.4	5.3	2.6	65.8		100.0
	Chikwawa	18.2	5.7	11.4	9.1	15.9	20.5	19.3	100.0
	Mwanza	26.7			13.3	20.0	33.3	6.7	100.0
	Blantyre Rural	12.0	2.5	.5	17.7	1.0	65.6	.7	100.0
	Blantyre City	33.8	10.9	13.1	21.5	14.1	2.2	4.4	100.0
	Zomba Rural	4.2	1.0	1.1	3.6	2.1	87.0	1.0	100.0
	Zomba Municipality	24.2	8.7	3.9	19.5	24.7	13.4	5.6	100.0
	Thyolo	10.9	.7	3.0	4.0	23.4	43.6	14.5	100.0
	Mulanje	1.3	2.5	13.8	6.3	8.8	60.0	7.5	100.0
	Phalombe	6.7	1.4	1.0	5.7	3.8	80.4	1.0	100.0
	Machinga	17.5		5.5	11.0	5.0	55.0	6.0	100.0
	Mangochi	28.3	.3	2.0	21.0	2.8	39.7	5.9	100.0
	Chiradzulu	17.1	3.4	5.6	26.9	17.1	24.4	5.6	100.0
Rural		7.1	.9	2.4	6.6	4.6	74.4	4.0	100.0
Urban		26.8	10.8	14.0	20.3	19.4	4.4	4.3	100.0

Source: Malawi Integrated Household Survey, 1997-98.

Table 22 - Secondary Occupation by District

	None	Professional and Technical	Administrative and Managerial	Clerical	Sales	Services	Agricultural	Other	Total
Malawi	87.4	1.0	.1	.1	4.7	1.2	4.3	1.2	100.0
Northern Region	93.1	.7		.4	1.1	.5	3.3	.8	100.0
Mzimba	95.0				1.0		4.0		100.0
Mzuzu City	97.7			.4	1.5	.4			100.0
Nkhata-Bay	91.3	.3			1.0		6.7	.7	100.0
Rumphi	85.4	12.5		2.1					100.0
Karonga	87.9			1.6	1.6	2.4	1.6	4.8	100.0
Chitipa	93.0					2.3	4.7		100.0
Central Region	85.5	1.1	.0	.0	6.4	1.4	4.0	1.6	100.0
Ntcheu	84.9	1.4			10.8	.5	2.4		100.0
Dedza	75.3	.4			11.8	5.2	4.8	2.5	100.0
Salima	53.9	7.4			20.1	5.2	12.3	1.1	100.0
Lilongwe Rural	92.9	.5	.1		2.5	.5	1.3	2.2	100.0
Lilongwe City	99.1				.2	.2	.5		100.0
Mchinji	90.5	.3			3.2	.4	5.6		100.0
Kasungu	87.5	2.2	.3	.3	1.9	.3	5.5	1.9	100.0
Dowa	87.8	1.7			4.7	.5	1.6	3.8	100.0
Ntchisi	94.9	.3			1.4		2.1	1.4	100.0
Nkhota-kota	70.9	1.1			17.0	.7	10.1	.2	100.0
Southern Region	88.8	1.0	.1	.1	3.0	1.1	5.2	.6	100.0
Nsanje	84.2	2.6				10.5	2.6		100.0
Chikwawa	97.7				1.1		1.1		100.0
Mwanza	80.0	6.7			6.7			6.7	100.0
Blantyre Rural	86.0	2.5		.2	5.2	.2	5.9		100.0
Blantyre City	98.4	.6		.2	.4	.4			100.0
Zomba Rural	86.6	.7	.2		3.3	1.0	7.4	.8	100.0
Zomba Municipality	97.8	.9	.4		.9				100.0
Thyolo	96.7				.3	.7	1.3	1.0	100.0
Mulanje	90.0	1.3			1.3	1.3	6.3		100.0
Phalombe	89.0				2.9	7.7	.5		100.0
Machinga	82.0	1.5			4.5	.5	7.0	4.5	100.0
Mangochi	70.3	2.3			7.6	1.4	17.6	.8	100.0
Chiradzulu	93.2	.9			3.0		3.0		100.0
Rural	85.6	1.2	.0	.1	5.3	1.4	5.0	1.4	100.0
Urban	98.4	.4	.1	.1	.6	.3	.1		100.0

Source: Malawi Integrated Household Survey, 1997-98.

Table 23 - Mean Time (hrs) Spent per Week on Household Tasks by Household Members 10 years or Older, by District

		Collecting firewood	Fetching water	Cooking	Cleaning house	Child care*
Malawi		3.56	4.86	6.51	2.90	6.97
Northern Region		5.12	5.88	6.40	3.43	5.93
	Mzimba	3.31	4.41	4.53	2.07	3.93
	Mzuzu City	3.58	1.19	10.50	5.08	8.17
	Nkhata-Bay	1.28	5.77	7.69	1.89	8.56
	Rumphi	21.64	11.60	9.62	10.22	6.90
	Karonga	7.03	7.76	6.77	6.86	4.78
	Chitipa	9.05	9.49	2.91	1.58	4.36
Central Region		2.56	4.15	5.47	2.05	7.79
	Ntcheu	3.01	3.58	5.06	.69	3.90
	Dedza	2.29	4.42	5.25	1.38	3.96
	Salima	1.72	3.82	4.28	.72	1.43
	Lilongwe Rural	1.98	3.88	5.43	1.89	11.74
	Lilongwe City	1.39	2.08	8.55	4.52	5.55
	Mchinji	1.99	2.22	3.33	1.52	3.07
	Kasungu	3.20	5.72	4.20	2.04	13.32
	Dowa	4.74	7.24	10.31	4.23	6.68
	Ntchisi	3.05	4.67	3.97	1.50	20.83
	Nkhota-kota	2.15	2.67	2.42	.97	3.89
Southern Region		4.25	5.36	7.68	3.70	6.35
	Nsanje	13.97	7.06	8.77	6.41	2.62
	Chikwawa	10.00	10.99	9.93	6.86	7.09
	Mwanza	1.29	3.33	4.59	6.30	3.36
	Blantyre Rural	3.10	10.81	12.78	4.29	7.27
	Blantyre City	2.58	2.95	9.62	4.64	4.83
	Zomba Rural	3.54	5.11	8.60	2.36	10.77
	Zomba Municipality	1.65	3.35	5.69	2.38	6.69
	Thyolo	6.61	3.54	5.08	3.84	1.81
	Mulanje	5.21	8.09	8.67	4.36	3.86
	Phalombe	1.97	1.50	3.82	2.12	3.63
	Machinga	4.48	4.33	5.29	2.92	7.06
	Mangochi	4.89	3.44	6.28	3.14	9.21
	Chiradzulu	2.77	5.86	5.51	2.74	4.05
Rural		3.77	5.20	6.20	2.72	7.14
Urban		2.19	2.60	8.57	4.16	5.83

*Child care was considered a primary or secondary activity.

Source: Malawi Integrated Household Survey, 1997-98

Table 24 - Percentage of Households with a Member (10 years or older) Seeking Work by District

		Not Seeking Work	Seeking Work
Malawi		97.2	2.8
Northern Region		97.7	2.3
	Mzimba	98.1	1.9
	Mzuzu City	95.3	4.7
	Nkhata-Bay	97.5	2.5
	Rumphi	100.0	
	Karonga	97.1	2.9
	Chitipa	100.0	
Central Region		98.2	1.8
	Ntcheu	98.6	1.4
	Dedza	99.5	.5
	Salima	98.7	1.3
	Lilongwe Rural	98.8	1.2
	Lilongwe City	92.4	7.6
	Mchinji	99.1	.9
	Kasungu	98.9	1.1
	Dowa	98.3	1.7
	Ntchisi	99.4	.6
	Nkhota-kota	97.5	2.5
Southern Region		96.2	3.8
	Nsanje	99.2	.8
	Chikwawa	98.3	1.7
	Mwanza	98.8	1.3
	Blantyre Rural	99.1	.9
	Blantyre City	95.8	4.2
	Zomba Rural	99.0	1.0
	Zomba Municipality	95.8	4.2
	Thyolo	98.0	2.0
	Mulanje	86.6	13.4
	Phalombe	98.1	1.9
	Machinga	98.1	1.9
	Mangochi	97.0	3.0
	Chiradzulu	92.8	7.2
Rural		97.5	2.5
Urban		94.9	5.1

Note: Includes only those who reported "seeking work" as their primary activity on the roster.

Source: Malawi Integrated Household Survey, 1997-98.

Table 25 -Time Taken to Access Facilities, by District

	Produce Market					Grocery/ Supermarket					Hospital/ Health Centre				
	Half hour or less	Over half hour to 1 hour	Over 1 hour to 2 hours	Over 2 hours	No response	Half hour or less	Over half hour to 1 hour	Over 1 hour to 2 hours	Over 2 hours	No response	Half hour or less	Over half hour to 1 hour	Over 1 hour to 2 hours	Over 2 hours	No response
Malawi	43.4	26.6	19.5	10.2	.3	74.3	15.5	6.8	3.3	.1	24.6	29.0	26.7	19.6	.1
Northern Region	32.2	23.4	21.2	22.5	.8	51.8	21.2	15.6	11.4	.1	24.6	22.9	23.9	28.5	.1
Mzimba	21.1	22.4	20.1	34.0	2.3	46.1	27.3	14.6	11.8	.2	21.1	16.5	21.6	40.6	.2
Mzuzu City	67.7	21.7	6.4	4.3		92.8	6.8	.4			32.3	45.1	14.5	8.1	
Nkhata-Bay	26.8	23.4	22.2	27.6		63.2	19.2	9.2	8.4		35.1	21.8	28.0	15.1	
Rumphi	20.7	55.2	20.7	3.4		55.2	37.9	6.9			17.2	27.6	44.8	10.3	
Karonga	21.7	14.6	30.4	33.3		22.9	15.0	29.2	32.9		13.3	12.9	20.0	53.8	
Chitipa	38.6	28.6	28.2	4.5		38.6	27.7	28.2	5.5		26.8	23.6	33.2	16.4	
Central Region	36.6	28.8	25.5	9.1		76.2	15.6	6.7	1.4	.0	25.5	31.4	26.8	16.1	.1
Ntcheu	36.3	27.0	29.3	7.4		83.3	14.9	1.9			14.9	40.9	28.8	15.3	
Dedza	18.7	26.9	32.8	21.6		62.4	24.1	11.6	1.8		15.3	24.4	24.4	36.0	
Salima	38.5	33.9	18.0	9.6		75.7	20.9	2.5	.8		25.9	31.0	25.1	18.0	
Lilongwe Rural	42.8	35.8	17.6	3.8		82.9	11.0	5.2	.9		26.0	38.3	26.3	9.4	
Lilongwe City	91.9	8.1				93.8	6.2				76.2	23.2	.3	.3	
Mchinji	30.7	26.3	28.8	14.2		65.9	18.3	12.8	2.7	.2	16.2	28.4	36.2	18.8	.5
Kasungu	23.5	31.9	31.5	13.1		70.6	22.2	6.6	.4	.2	12.5	23.0	30.0	34.2	.2
Dowa	21.9	30.6	33.1	14.3		67.5	15.4	12.0	5.1		19.0	31.4	34.0	15.6	
Ntchisi	62.9	18.2	17.6	1.3		98.7	1.3				64.2	13.8	20.8	1.3	
Nkhota-kota	7.5	32.5	59.6	.4		73.3	20.4	6.3			6.3	54.2	39.2	.4	
Southern Region	51.8	25.9	14.3	7.7	.3	79.1	13.8	4.4	2.6	.2	23.8	28.9	27.4	19.7	.2
Nsanje	43.9	13.0	9.2	33.9		44.8	14.6	12.1	28.5		19.2	17.2	18.8	44.8	
Chikwawa	47.6	38.5	5.6	8.3		56.3	29.2	8.7	5.9		18.1	46.2	24.3	11.1	.3
Mwanza	2.5	23.8	30.0	43.8		57.5	40.0	2.5			8.8	12.5	33.8	45.0	
Blantyre Rural	36.8	19.3	30.2	13.1	.6	87.2	9.2	2.1	.9	.6	14.6	18.2	34.9	31.7	.6
Blantyre City	85.8	12.0	2.0	.2		95.4	4.4	.2			48.6	38.0	7.8	5.6	
Zomba Rural	46.0	40.9	12.9	.1		85.6	13.7	.4	.3		21.9	32.1	37.7	8.3	
Zomba Municipalit	80.9	17.4	.8		.8	89.8	8.5	.8		.8	34.7	47.9	16.9		.4
Thyolo	16.9	31.7	33.0	18.4		45.6	26.2	20.9	7.1	.3	14.6	30.5	23.7	31.0	.3
Mulanje	50.5	33.1	10.6	5.9		78.8	17.6	2.5	1.1		12.5	19.3	22.5	45.7	
Phalombe	98.1	1.4			.5	99.5				.5	37.0	43.5	18.5	.5	.5
Machinga	49.5	34.3	13.9	1.6	.6	78.3	14.6	5.5	.3	1.3	30.1	29.1	21.0	19.1	.6
Mangochi	47.2	20.6	19.5	11.4	1.3	81.0	13.1	5.2	.7		20.8	19.3	45.5	14.4	
Chiradzulu	50.7	31.6	15.6	1.9	.2	87.4	10.3	1.7	.6		22.7	29.1	29.7	18.5	
Rural	37.3	28.6	22.1	11.7	.3	71.3	16.9	7.8	3.9	.1	20.6	27.8	29.5	22.0	.1
Urban	83.5	13.5	2.0	.8	.1	93.7	5.9	.3		.1	50.6	37.1	8.5	3.7	.1

continued

Source: Malawi Integrated Household Survey, 1997-98

Table 25 - Time Taken to Access Facilities, by District

	Bus stage					Admarc depot					Bank				
	Half hour or less	Over half hour to 1 hour	Over 1 hour to 2 hours	Over 2 hours	No response	Half hour or less	Over half hour to 1 hour	Over 1 hour to 2 hours	Over 2 hours	No response	Half hour or less	Over half hour to 1 hour	Over 1 hour to 2 hours	Over 2 hours	No response
Malawi	43.6	19.7	17.5	18.3	1.0	25.1	26.0	26.2	22.0	.6	11.2	18.5	18.3	45.5	6.5
Northern Region	35.6	19.2	21.6	23.6		16.6	21.0	22.5	39.5	.5	10.4	16.4	9.4	58.4	5.4
Mzimba	28.1	15.4	20.7	35.7		14.2	9.5	14.0	61.7	.6	7.2	9.9	8.9	57.9	16.1
Mzuzu City	69.4	26.8	3.4	.4		38.7	29.4	14.0	17.4	.4	31.5	48.9	9.8	9.4	.4
Nkhata-Bay	41.4	15.9	15.1	27.6		11.3	30.1	32.2	25.9	.4	18.4	26.4	15.9	39.3	
Rumphi	17.2	27.6	46.6	8.6		1.7	62.1	36.2				1.7	5.2	93.1	
Karonga	16.7	14.2	30.0	39.2		12.1	11.3	32.5	43.8	.4	.4			99.2	.4
Chitipa	35.0	25.9	34.1	5.0		12.7	26.8	24.5	35.5	.5		6.4	14.1	79.1	.5
Central Region	42.9	21.6	16.2	19.2	.1	27.0	26.7	29.7	16.2	.4	11.5	19.3	24.9	40.7	3.6
Ntcheu	35.8	33.0	11.2	20.0		15.8	44.2	30.7	7.4	1.9	9.8	9.3	6.0	13.0	61.9
Dedza	27.3	13.2	13.9	45.6		8.9	28.2	28.5	34.4		3.0	10.5	8.7	77.9	
Salima	43.1	28.0	19.2	9.6		33.1	32.2	28.5	6.3		19.2	23.0	29.7	28.0	
Lilongwe Rural	36.5	26.4	15.0	22.0		31.8	30.1	28.9	8.9	.3	6.7	25.6	16.8	50.8	.2
Lilongwe City	91.0	8.7		.3		77.0	22.1	.3		.6	50.1	35.9	13.7		.3
Mchinji	34.6	21.3	26.8	16.9	.5	20.6	21.5	34.6	22.4	.9	11.9	11.4	36.2	39.6	.9
Kasungu	53.5	23.9	20.3	2.1	.2	12.9	23.5	35.5	27.5	.6	4.4	12.7	47.1	35.1	.6
Dowa	26.6	14.6	20.5	38.4		18.1	18.8	31.0	31.9	.2	9.3	15.4	24.1	51.3	
Ntchisi	73.0	13.8	.6	12.6		58.5	20.1	21.4			4.4	10.1	13.2	72.3	
Nkhota-kota	39.2	35.4	25.0	.4		5.8	31.7	62.5			5.4	32.1	62.5		
Southern Region	46.3	18.3	17.4	16.1	2.0	26.1	26.9	24.5	21.7	.8	11.3	18.5	15.7	45.5	9.1
Nsanje	46.9	10.9	8.4	33.9		36.0	20.1	7.5	35.6	.8	1.3	4.6	10.0	26.4	57.7
Chikwawa	52.1	22.6	10.1	14.9	.3	41.0	36.5	13.9	7.6	1.0	2.1	8.0	3.8	82.3	3.8
Mwanza		15.0	41.3	43.8			3.8	51.3	45.0		1.3	1.3	1.3	96.3	
Blantyre Rural	41.5	16.1	27.2	14.6	.6	21.4	18.4	36.6	21.2	2.4	19.7	18.8	19.5	39.0	3.0
Blantyre City	90.2	6.9	2.7	.2		61.2	29.2	7.1	2.0	.5	42.9	45.1	7.3	1.9	2.9
Zomba Rural	38.1	22.7	26.8	12.2	.1	18.7	23.7	39.0	17.3	1.3	2.2	26.3	24.5	45.8	1.3
Zomba Municipality	59.3	26.7	13.1		.8	37.3	50.0	12.7			32.2	47.5	20.3		
Thyolo	27.7	20.2	31.2	20.7	.3	8.1	13.4	12.3	66.2		5.8	9.3	2.5	81.9	.5
Mulanje	34.6	12.7	14.7	38.0		9.1	11.3	18.1	60.7	.8	5.3	12.3	14.0	68.2	.2
Phalombe	30.6	7.9	38.4	22.7	.5	41.7	46.8	10.2	.5	.9	17.6	13.9	4.2	8.3	56.0
Machinga	32.7	24.6	11.0	31.1	.6	28.5	33.0	21.7	15.9	1.0	2.9	7.8	8.1	52.4	28.8
Mangochi	40.5	15.6	17.6	13.1	13.1	18.3	25.4	40.7	15.2	.4	.3	5.6	15.2	68.7	10.2
Chiradzulu	58.5	34.9	5.5	1.1		19.2	45.1	31.6	3.6	.6	8.6	17.5	43.6	30.1	.2
Rural	37.7	20.5	19.6	21.0	1.1	20.2	25.3	29.1	24.8	.7	6.7	14.6	19.3	52.1	7.3
Urban	81.8	14.0	3.9	.2	.1	57.5	30.9	7.5	3.7	.4	41.0	43.8	11.5	2.3	1.3

continued

Source: Malawi Integrated Household Survey, 1997-98

Table 25 -Time Taken to Access Facilities, by District

	Post Office					Police Station				
	Half hour or less	Over half hour to 1 hour	Over 1 hour to 2 hours	Over 2 hours	No response	Half hour or less	Over half hour to 1 hour	Over 1 hour to 2 hours	Over 2 hours	No response
	21.7	26.4	25.3	26.2	.5	20.3	21.4	24.6	33.2	.5
	15.9	23.3	21.8	38.5	.5	13.7	16.9	15.9	52.7	.8
Mzimba	15.9	9.5	15.9	57.9	.8	9.3	5.1	11.8	72.1	1.7
Mzuzu City	34.5	52.3	8.1	4.7	.4	31.5	48.9	9.4	9.8	.4
Nkhata-Bay	9.2	32.2	25.1	33.5		17.6	27.2	25.1	30.1	
Rumphu		56.9	43.1					6.9	93.1	
Karonga	16.3	12.9	23.8	46.7	.4	17.1	12.9	24.2	45.4	.4
Chitipa	7.3	14.5	38.2	39.5	.5		5.9	15.0	78.6	.5
	21.9	27.8	25.7	24.4	.3	21.4	21.2	28.1	29.0	.3
Ntcheu	16.3	35.3	28.8	18.1	1.4	10.7	21.4	14.9	52.1	.9
Dedza	9.1	22.8	36.0	32.1		1.6	11.2	21.9	65.4	
Salima	18.8	23.4	29.3	28.5		18.0	25.1	30.1	26.8	
Lilongwe Rural	13.3	30.2	26.7	29.6	.2	15.1	23.2	32.1	29.3	.2
Lilongwe City	73.7	26.1			.3	85.7	14.0			.3
Mchinji	25.4	21.3	27.2	25.2	.9	26.1	21.7	26.8	24.5	.9
Kasungu	9.1	15.9	32.8	41.9	.4	5.7	18.0	34.0	41.9	.4
Dowa	18.1	26.4	32.1	23.4		20.5	29.1	35.4	15.0	
Ntchisi	58.5	16.4	12.6	12.6		49.1	13.8	13.2	23.9	
Nkhota-kota	13.8	72.5	13.8			6.7	32.1	61.3		
	23.2	26.2	25.9	24.1	.6	21.4	22.8	24.4	30.9	.6
Nsanje	4.6	16.3	19.2	59.4	.4	4.6	10.9	15.5	68.6	.4
Chikwawa	22.9	20.8	24.3	30.6	1.4	23.3	22.2	23.3	30.2	1.0
Mwanza		28.8	26.3	45.0			28.8	26.3	45.0	
Blantyre Rural	27.0	17.8	27.6	25.7	1.9	21.2	15.6	20.8	40.5	1.9
Blantyre City	62.5	30.7	4.9	1.5	.3	53.9	38.0	5.9	1.7	.5
Zomba Rural	18.8	36.5	27.8	15.5	1.3	18.6	28.5	35.1	16.5	1.3
Zomba Municipality	30.9	48.7	20.3			28.8	45.8	25.4		
Thyolo	7.6	14.4	32.0	46.1		8.8	13.6	31.7	45.8	
Mulanje	19.7	19.3	18.0	43.1		9.6	15.1	21.6	53.7	
Phalombe	26.4	34.3	37.5	.9	.9	19.9	17.1	17.1	44.9	.9
Machinga	23.3	32.0	24.6	19.4	.6	11.3	25.2	27.5	35.0	1.0
Mangochi	15.9	15.2	36.1	32.6	.3	27.1	16.0	29.7	26.8	.3
Chiradzulu	12.4	36.8	38.7	11.8	.2	14.7	23.4	29.9	31.8	.2
	16.5	24.9	28.1	30.0	.5	15.2	19.3	27.1	37.9	.5
	55.4	36.1	6.8	1.4	.3	54.0	35.0	8.3	2.3	.4

TABLE 20 Mean Household Current Expenditure, by District

	Food	Nonfood	Total
Malawi	3,029.49	1,787.72	4,817.21
Northern Region	3,939.03	1,545.36	5,484.39
Mzimba	3,484.81	1,073.83	4,558.65
Mzuzu City	3,387.24	2,891.02	6,278.26
Nkhata-Bay	4,362.74	1,348.99	5,711.73
Rumphi	2,709.83	741.47	3,451.30
Karonga	6,199.19	2,231.66	8,430.85
Chitipa	2,446.63	732.77	3,179.40
Central Region	3,151.36	1,669.20	4,820.56
Ntcheu	1,833.81	194.36	2,028.17
Dedza	2,379.55	625.01	3,004.56
Salima	3,069.77	582.82	3,652.59
Lilongwe Rural	2,266.56	688.33	2,954.89
Lilongwe City	7,078.60	8,812.73	15,891.33
Mchinji	2,484.11	969.49	3,453.61
Kasungu	3,226.95	935.73	4,162.68
Dowa	3,308.72	660.96	3,969.69
Nkhota-kota	2,605.61	708.29	3,313.90
Southern Region	2,590.94	1,980.43	4,571.37
Nsanje	2,221.52	427.92	2,649.43
Chikwawa	3,134.31	802.60	3,936.91
Mwanza	1,888.14	333.36	2,221.50
Blantyre Rural	2,481.40	455.37	2,936.77
Blantyre City	4,761.87	9,481.93	14,243.80
Zomba Rural	2,868.17	694.89	3,563.07
Zomba Municipality	3,622.56	2,814.03	6,436.59
Thyolo	1,526.24	391.70	1,917.94
Mulanje	2,160.67	768.31	2,928.98
Phalombe	1,215.94	576.11	1,792.05
Machinga	1,895.65	712.23	2,607.89
Mangochi	2,008.23	566.18	2,574.42
Chiradzulu	1,943.74	576.54	2,520.29
Rural	2,649.45	761.30	3,410.76
Urban	5,034.57	7,203.09	12,237.66

Source: Malawi Integrated Household Survey, 1997-98

Table 27-Percent Distribution of Household Expenditure by Food and Non-Food

		Cereal	Starche	Sugar	Pulse	Vegetabl s	Fruit	Mea	Fish	Egg	Milk/ Fats &	Beverage	Alcoho	Other	
Malawi		34.7	3.8	3.9	5.4	10.1	1.8	4.7	5.4	.3	.4	1.3	.4	.6	1.4
Norther Regio		29.8	6.0	3.8	7.6	7.6	1.6	7.5	2.7	.3	1.0	1.8	.5	1.0	1.5
	Mzimb	34.3	3.0	3.5	12.9	9.0	1.9	5.4	1.7	.1	.8	1.1	.4	1.8	1.5
	Mzuzu	15.4	1.8	4.9	4.6	6.8	.4	9.1	4.8	1.0	1.6	3.6	.7	.4	1.3
	Nkhata- Rump	25.1	14.0	3.8	4.8	7.0	2.2	7.7	5.1	.0	.3	2.1	.8	.9	1.3
	Karong	30.8	.1	4.7	16.3	1.2	.1	10.5	1.9	.0	.3	1.8	.8	1.7	1.4
	Chitip	27.1	9.2	3.8	3.4	5.0	2.9	12.5	2.7	.3	1.0	1.6	.9	.6	1.1
		43.3	4.4	3.4	6.0	10.3	.2	3.1	.5	.1	1.7	1.6	.0	.6	2.1
Central Regio		36.4	4.6	3.3	6.6	11.2	1.5	4.6	4.0	.3	.4	.9	.4	.6	1.2
	Ntche	48.5	6.9	3.2	9.7	8.1	3.5	6.0	2.5	.0	.0	.1	.0	.5	1.1
	Dedz	32.9	2.9	2.7	16.0	14.9	1.9	4.2	2.7	.2	.2	.5	.3	.4	.8
	Salim	36.2	1.9	3.1	11.1	15.5	1.9	4.1	6.2	.0	.1	1.0	.2	.5	1.5
	Lilongwe	41.3	1.7	3.4	6.3	13.2	1.6	3.6	3.0	.2	.1	.6	.3	.5	1.2
	Lilongwe	11.1	1.6	4.2	2.4	7.5	1.3	7.6	5.9	1.3	1.9	3.3	1.2	1.3	1.4
	Mchin	45.3	1.9	3.2	4.9	7.8	.6	4.0	3.4	.2	.3	.7	.2	.6	1.6
	Kasung	38.0	1.8	3.2	9.3	12.9	1.6	6.3	1.9	.1	.3	.8	.3	.7	1.1
	Dowa	52.1	.7	2.2	3.3	12.3	.9	4.5	3.4	.2	.4	.7	.4	.2	1.4
	Nkhota-	15.5	37.9	4.0	.6	4.4	1.8	2.0	10.9	.0	.1	.3	.3	.6	1.0
Souther Regio		35.0	2.3	4.5	3.6	10.2	2.2	3.8	7.6	.3	.3	1.5	.4	.5	1.6
	Nsanj	31.6	4.8	6.7	4.1	8.1	3.4	3.9	6.0	.1	.3	2.4	.6	.4	3.4
	Chikwaw	38.7	1.5	5.9	3.8	9.2	1.5	8.3	4.1	.2	.6	1.4	.7	.2	1.3
	Mwanz	43.4	2.3	3.3	7.0	9.3	2.7	10.6	6.2	.0	.0	.7	.3	.5	1.3
	Blantyre	39.9	2.8	3.4	5.4	17.8	2.1	2.6	7.3	.2	.0	.7	.1	.2	1.7
	Blantyre	15.8	1.6	4.8	2.1	4.8	.9	6.6	5.5	1.0	.8	2.7	1.1	.7	.9
	Zomba	50.2	2.7	2.2	3.7	8.9	3.7	1.9	7.7	.1	.2	.7	.1	.7	1.2
	Zomba	21.4	2.9	5.8	3.5	7.3	1.5	4.7	9.4	.7	.8	2.7	.8	1.6	1.3
	Thyol	33.3	2.5	5.5	4.5	12.8	4.2	3.2	7.4	.1	.1	1.6	.3	.7	1.9
	Mulanj	45.7	2.7	3.2	3.3	12.0	2.4	2.5	5.5	.0	.0	.6	.2	.2	1.8
	Phalomb	37.6	.6	3.0	2.0	10.6	1.4	3.5	6.9	.2	.3	1.4	1.0	1.2	1.1
	Maching	31.3	1.2	2.7	4.7	9.5	1.4	5.6	9.7	.0	.2	1.0	.1	.6	1.9
	Mangoc	38.6	2.3	6.1	2.5	10.7	1.3	2.4	11.5	.2	.2	1.0	.2	.4	2.0
	Chiradzul	42.5	1.8	3.8	4.3	11.1	2.5	2.8	6.8	.1	.1	1.3	.2	.2	1.0
Rural		38.4	4.2	3.8	5.9	10.9	2.0	4.3	5.3	.1	.3	1.0	.3	.6	1.5
Urba		15.3	1.8	4.8	2.8	6.3	1.0	7.0	6.2	1.0	1.3	3.0	1.0	1.0	1.2

Source: Malawi Integrated Household Survey,

Table 27-Continues

Tobacc	Men' clothin	Women clothin	Boys clothin	Girls clothin	Othe clothin	Housin	Fue	H wage	H consumabl	Comm catio	Transpo atio	Newspas ers	Educati	Healt	Person car
.2	2.7	2.9	1.1	1.0	.3	2.8	6.4	.3	.7	.0	.3	.0	.8	1.2	3.6
.1	4.5	3.8	1.6	1.1	.2	2.1	4.5	.0	.8	.0	.3	.0	1.7	.9	3.7
.1	4.3	4.2	1.2	1.0	.2	.3	2.1	.0	.8	.0	.4	.0	1.8	.8	3.9
.0	4.4	3.4	1.8	.8	.3	8.9	11.	.2	.9	.0	.1	.0	2.9	2.0	3.8
.2	4.7	4.1	1.4	1.6	.3	1.7	2.4	.0	.4	.0	.6	.0	.8	1.1	3.4
.1	5.2	5.4	1.8	1.4	.0	.9	3.0	.0	.7	.0	.0	.0	.6	1.4	4.6
.2	5.0	4.1	2.4	.8	.1	1.5	6.6	.0	1.0	.0	.1	.0	2.2	.2	2.1
.0	4.3	2.6	1.2	1.2	.0	.4	3.2	.0	1.0	.0	.0	.0	.7	.8	5.5
.1	2.5	2.8	1.0	.9	.3	2.2	7.1	.4	.5	.0	.3	.0	.5	1.2	3.1
.0	1.1	1.6	.8	.4	.1	.1	1.6	.0	.4	.0	.0	.0	.1	.8	2.6
.0	1.1	1.8	.8	.9	.3	.5	9.8	.1	.4	.0	.0	.0	.1	.6	2.7
.3	1.3	2.5	1.1	1.0	.4	1.6	2.5	.1	.6	.0	.6	.0	.3	.6	2.3
.1	1.9	2.3	.8	.6	.1	.8	11.	.1	.4	.0	.3	.0	.1	.4	3.2
.2	3.7	3.0	.8	1.0	.5	13.	14.	.7	1.0	.1	.8	.2	2.6	1.1	3.3
.0	3.0	3.9	1.3	1.0	.1	.9	3.3	1.6	.4	.0	.1	.0	.3	3.9	3.8
.1	3.4	3.6	1.3	1.4	.7	.4	3.0	.4	.5	.0	.1	.0	.7	1.7	2.6
.2	1.9	2.3	.9	.9	.0	.9	3.5	.0	.6	.0	.2	.0	.1	.8	4.4
.1	4.7	3.1	1.4	.8	.4	.6	3.9	.0	.4	.0	.5	.0	.5	1.4	1.7
.2	2.1	2.6	1.1	1.0	.3	3.6	6.5	.4	.9	.0	.3	.0	.8	1.2	4.0
.2	3.9	4.0	1.6	1.1	.6	1.2	3.5	.1	.9	.0	.0	.1	.3	.7	5.6
.3	2.6	2.2	1.3	.8	.1	3.9	3.1	.3	1.2	.0	.1	.1	1.3	.3	2.9
.1	.7	.3	.6	.5	.0	2.1	3.0	.0	.5	.1	.0	.0	.0	.1	4.4
.1	1.8	2.7	.6	.6	.0	.2	3.8	.0	.6	.0	.2	.0	.1	.7	3.0
.1	3.0	2.4	1.6	1.2	.3	11.	16.	1.7	.7	.0	.5	.1	2.9	3.2	3.1
.2	1.3	2.1	.6	.6	.1	.9	4.8	.1	.6	.0	.1	.0	.2	.8	3.1
.5	2.1	2.2	1.1	1.3	.9	6.4	10.	.9	.7	.0	1.2	.1	1.2	1.3	3.3
.2	2.8	2.4	1.4	.6	.1	1.7	3.4	.5	.9	.1	.1	.0	.8	1.0	4.7
.3	1.2	2.9	.9	.9	.2	6.1	1.6	.0	.8	.0	.1	.0	.2	.6	3.4
.0	2.0	3.6	1.2	1.5	.1	4.0	8.3	.3	.7	.0	.6	.0	.6	1.6	2.9
.1	2.3	2.5	1.3	.8	.2	1.3	13.	.0	1.0	.0	.6	.0	.6	1.0	4.4
.2	1.6	2.2	.7	.8	.4	.8	4.1	.1	1.6	.0	.3	.0	.2	1.0	5.4
.1	1.7	3.8	1.0	1.7	.2	1.1	2.9	.5	1.1	.0	.1	.0	.8	1.0	4.2
.1	2.6	2.9	1.1	.9	.2	1.3	4.9	.2	.7	.0	.2	.0	.5	1.0	3.7
.2	3.3	2.7	1.3	1.1	.5	10.	14.	1.0	.8	.1	.6	.1	2.5	2.1	3.3

usehold

**Table 28-Gini Coefficients of Per Capita Income, Expenditures
and Assets**

	Income per capita	Expenditures per capita	Assets per capita
Malawi	.88	.54	.86
Northern Region	.65	.43	.64
Central Region	.86	.53	.83
Southern Region	.93	.59	.90
Nsanje	.76	.51	.73
Chikwawa	.70	.38	.64
Mwanza	.60	.34	.45
Blantyre Rural	.71	.38	.61
Blantyre City	.92	.61	.84
Zomba Rural	.73	.45	.78
Zomba Municipality	.74	.47	.83
Thyolo	.67	.43	.66
Mulanje	.83	.46	.66
Phalombe	.74	.41	.66
Machinga	.72	.39	.76
Mangochi	.79	.45	.82
Chiradzulu	.71	.41	.63
Ntcheu	.69	.31	.75
Dedza	.56	.36	.63
Salima	.63	.40	.78
Lilongwe Rural	.62	.44	.60
Lilongwe City	.83	.53	.81
Mchinji	.69	.42	.81
Kasungu	.66	.35	.66
Dowa	.69	.41	.70
Nkhota-kota	.62	.35	.73
Mzimba	.67	.37	.65
Mzuzu City	.50	.38	.69
Nkhata-Bay	.55	.41	.66
Rumphi	.59	.46	.75
Karonga	.67	.47	.54
Chitipa	.49	.32	.45
Rural	.72	.44	.72
Urban	.89	.57	.85

Source: Malawi Integrated Household Survey, 1997-98

**Table 29-Mean Supply of Harvested Maize in Kilograms Per
Capita, by District**

Malawi		88.8
Northern Region		118.7
	Mzimba	136.9
	Mzuzu City	58.0
	Nkhata-Bay	147.8
	Rumphi	216.4
	Karonga	53.5
	Chitipa	168.8
Central Region		122.5
	Ntcheu	69.1
	Dedza	82.3
	Salima	103.8
	Lilongwe Rural	106.5
	Lilongwe City	25.8
	Mchinji	240.1
	Kasungu	180.2
	Dowa	178.8
	Nkhota-kota	53.1
Southern Region		46.0
	Nsanje	141.2
	Chikwawa	19.1
	Mwanza	15.5
	Blantyre Rural	14.1
	Blantyre City	9.1
	Zomba Rural	78.8
	Zomba Municipality	58.4
	Thyolo	32.0
	Mulanje	51.8
	Phalombe	18.5
	Machinga	105.0
	Mangochi	40.7
	Chiradzulu	.9
Rural		98.9
Urban		30.5

Source: Malawi Integrated Household Survey, 1997-98

**Table 30-Median Per Capita Income, Assets and Current Expenditure, by District,
in 1997-98 Kwacha**

		Income	Assets	Expenditures
Malawi		1,260	570	2,776
Northern Region		2,400	1,079	3,837
	Mzimba	1,970	824	3,509
	Mzuzu City	4,372	1,212	4,911
	Nkhata-Bay	1,898	475	4,107
	Rumphi	2,850	498	2,119
	Karonga	4,373	2,705	6,003
	Chitipa	1,405	2,005	2,607
Central Region		1,303	504	2,837
	Ntcheu	619	430	1,630
	Dedza	732	328	2,473
	Salima	1,058	395	2,824
	Lilongwe Rural	848	492	2,144
	Lilongwe City	9,000	1,650	9,302
	Mchinji	1,408	375	2,473
	Kasungu	1,500	535	3,416
	Dowa	1,528	545	3,235
	Nkhota-kota	1,358	381	2,788
Southern Region		862	520	2,348
	Nsanje	450	347	1,629
	Chikwawa	1,080	668	3,171
	Mwanza	1,013	304	1,550
	Blantyre Rural	674	539	2,424
	Blantyre City	4,870	2,926	6,483
	Zomba Rural	676	403	2,477
	Zomba Municipality	2,490	840	4,088
	Thyolo	1,123	290	1,372
	Mulanje	220	322	1,998
	Phalombe	1,470	348	1,579
	Machinga	660	556	1,956
	Mangochi	356	402	1,880
	Chiradzulu	753	614	1,839
Rural		990	496	2,465
Urban		5,175	1,558	6,369

Source: Malawi Integrated Household Survey, 1997-98

Table 31-Percentage Distribution of Income by Source, by District

		Crop production (net)	Sales Livestock & products (net)	Nonfarm income (net)	Salaries and wages	In-kind income	Rents & interests	Transfer income (net)	Other income
Malawi		32.3	4.9	16.3	25.5	1.9	1.4	12.8	4.9
Northern Region		7.7	4.0	11.6	28.6	1.5	1.1	35.4	10.1
	Mzimba	-29.5	6.2	5.3	8.0	.8	.2	92.1	16.9
	Mzuzu City	2.0	1.2	9.0	81.9	1.5	.9	-3.8	7.4
	Nkhata-Bay	19.5	2.4	6.6	55.9	1.3	.6	9.6	4.2
	Rumphi	40.8	.4	5.0	9.6	18.0	1.2	3.2	21.8
	Karonga	35.8	6.2	24.7	10.5	.7	4.1	18.0	.0
	Chitipa	35.6	2.4	17.9	14.0	.7	.1	14.3	15.1
Central Region		42.7	3.3	15.6	21.0	1.9	1.4	7.7	6.5
	Ntcheu	49.8	12.6	10.0	3.4	11.0	1.2	5.7	6.3
	Dedza	68.8	4.1	12.1	19.2	2.6	.1	-10.0	3.1
	Salima	24.8	1.2	34.9	15.0	5.9	1.6	-2.1	18.6
	Lilongwe Rural	64.1	5.0	9.6	12.0	1.7	1.0	.9	5.7
	Lilongwe City	.3	.0	15.7	75.3	2.3	4.5	-8	2.7
	Mchinji	1.0	3.6	10.9	20.2	.2	.4	54.5	9.2
	Kasungu	45.6	1.6	20.8	14.6	-5	.1	7.7	10.1
	Dowa	69.8	2.7	11.5	13.0	.2	1.2	-1.8	3.4
	Nkhota-kota	41.6	.7	31.9	8.7	1.1	3.0	11.5	1.5
Southern Region		32.0	6.7	18.7	28.4	2.1	1.5	9.0	1.7
	Nsanje	66.2	3.0	4.9	6.4	3.2	.5	15.1	.8
	Chikwawa	10.4	18.9	14.4	26.1	.6	8.6	20.2	.8
	Mwanza	19.2	8.6	37.6	.0	2.4	.0	30.6	1.5
	Blantyre Rural	13.0	7.1	35.1	7.7	11.4	.0	25.7	.0
	Blantyre City	-1.5	.0	26.7	64.9	.4	2.9	3.4	3.2
	Zomba Rural	61.8	1.2	8.6	16.3	4.0	1.0	5.1	2.0
	Zomba Municipality	11.6	1.9	25.4	54.4	-9	2.6	-2.7	7.7
	Thyolo	29.3	5.3	13.0	47.1	1.9	1.5	1.4	.5
	Mulanje	61.4	14.7	8.4	6.0	.5	.4	7.5	1.1
	Phalombe	25.6	9.3	19.4	29.2	.0	.6	15.7	.2
	Machinga	54.1	9.7	19.8	13.9	.5	.6	.5	.7
	Mangochi	40.5	4.7	20.4	17.0	.6	1.0	15.5	.2
	Chiradzulu	6.3	15.6	22.4	37.0	3.1	1.2	10.8	3.5
Rural		38.1	5.7	15.5	17.3	2.1	1.1	15.2	5.0
Urban		1.7	.5	20.6	68.8	.9	3.0	.1	4.4

Table 32 -Mean Value of Assets Per Capita by District, in 1997-98 Kwacha(zeroes applied for assets not reported and included in computing the mean values)

	Total	House	Furniture	Appliance	Motor vehicle	Other transport	Agricultural/ fishing/ implements/ equipment	Other	Livestock poultry
Malawi	4540.0	2266.3	266.7	283.2	1126.1	164.6	89.0	0.2	343.8
Northern Region	2866.2	1341.9	264.7	187.0	173.1	140.6	85.5	0.1	673.4
Mzimba	2029.7	445.1	193.7	99.5	163.2	161.5	114.4	0.2	852.0
Mzuzu City	4934.5	2376.0	582.3	924.7	470.3	79.9	53.6	0.0	447.7
Nkhata-Bay	1249.6	372.0	250.3	14.6	180.4	60.4	62.4	0.0	309.7
Rumphi	2475.9	221.9	173.5	19.9	98.3	439.4	119.2	0.0	1403.6
Karonga	4113.2	2632.9	207.5	20.2	66.7	192.7	83.5	0.0	909.6
Chitipa	2954.1	2105.8	180.1	0.2	4.8	112.1	75.6	0.0	475.4
Central Region	5212.8	2270.6	269.4	374.1	1682.8	170.8	54.6	0.0	390.6
Ntcheu	1379.7	486.9	58.7	3.0	16.1	122.6	168.1	0.0	524.4
Dedza	673.8	202.1	33.2	55.5	0.0	120.4	33.5	0.0	229.1
Salima	1692.7	968.2	99.7	49.8	0.0	148.9	31.8	0.0	394.4
Lilongwe Rural	1716.0	503.1	59.2	9.0	654.7	130.2	48.7	0.0	311.0
Lilongwe City	43680.8	20422.7	2102.7	3954.2	16809.0	375.0	16.4	0.0	0.9
Mchinji	1679.6	313.4	96.5	20.6	171.3	224.5	46.8	0.0	806.6
Kasungu	1285.2	394.6	105.5	8.5	27.5	164.3	56.2	0.0	528.6
Dowa	1790.8	727.7	210.4	64.3	34.5	197.3	63.3	0.0	493.3
Ntchisi	1190.8	480.6	68.3	0.8	0.0	130.9	49.7	0.0	460.4
Nkhota-kota	1181.2	695.4	82.5	8.3	33.9	79.8	92.1	0.0	189.2
Southern Region	4491.9	2522.8	265.3	240.3	964.8	166.6	116.6	0.3	215.2
Nsanje	1054.2	344.0	43.5	3.2	1.2	96.3	30.0	0.0	535.9
Chikwawa	1522.3	226.4	70.9	20.2	37.9	141.8	50.0	0.0	975.1
Mwanza	856.4	187.2	107.5	0.0	108.0	125.3	216.0	0.0	112.3
Blantyre Rural	1251.4	846.3	114.1	26.7	43.5	39.9	40.6	0.3	140.1
Blantyre City	26827.9	16047.4	1449.6	1706.4	6778.8	645.8	75.3	0.0	124.5
Zomba Rural	1644.5	1075.4	110.9	35.3	81.4	116.8	71.0	1.5	152.3
Zomba Municipality	7118.9	2613.2	592.7	624.7	2045.2	87.4	1083.5	0.0	72.2
Thyolo	675.0	378.1	69.3	15.2	75.6	26.2	33.8	1.0	75.9
Mulanje	1016.9	515.5	63.0	7.4	137.2	70.5	81.8	0.3	141.3
Phalombe	856.4	200.1	61.5	20.6	274.0	75.8	15.0	0.0	209.4
Machinga	2154.7	773.3	92.2	23.8	597.7	153.1	61.5	0.1	453.1
Mangochi	1661.1	978.5	105.9	7.7	63.7	217.1	152.0	0.0	136.1
Chiradzulu	1300.2	801.3	88.7	58.7	128.6	66.3	34.6	0.0	122.1
Rural	1541.4	679.9	104.6	26.6	156.5	130.0	68.3	0.2	375.2
Urban	24162.3	12647.3	1327.7	1962.7	7470.7	390.9	224.6	0.0	138.2

Source: Malawi Integrated Household Survey, 1997-98

Table 33-Mean Amount Borrowed Across Households, Past 12 Months, by District

	Total amount borrowed past 12 months (non-borrowers=0)		Total amount borrowed past 12 months (borrowers only)	
	Mean	N	Mean	N
Malawi	468	10698	2,737	1830
Northern Region	388	1465	2,964	192
Mzimba	837	473	2,976	133
Mzuzu City	194	235	4,550	10
Nkhata-Bay	69	239	609	27
Rumphi	890	58	8,600	6
Karonga	230	240	18,377	3
Chitipa	21	220	356	13
Central Region	908	4018	4,303	848
Ntcheu	434	215	1,664	56
Dedza	131	439	492	117
Salima	792	239	1,618	117
Lilongwe Rural	108	985	846	126
Lilongwe City	6,570	357	41,882	56
Mchinji	534	437	1,961	119
Kasungu	465	473	2,526	87
Dowa	651	474	2,271	136
Ntchisi	113	159	2,240	8
Nkhota-kota	321	240	2,965	26
Southern Region	152	5215	1,000	790
Nsanje	81	239	721	27
Chikwawa	167	288	980	49
Mwanza	0	80	.	0
Blantyre Rural	55	467	641	40
Blantyre City	347	590	5,252	39
Zomba Rural	116	696	857	94
Zomba Municipality	790	236	3,583	52
Thyolo	123	397	325	150
Mulanje	94	529	690	72
Phalombe	22	216	394	12
Machinga	153	309	725	65
Mangochi	73	693	385	131
Chiradzulu	52	475	415	59
Rural	240	9280	1,331	1673
Urban	1,962	1418	17,720	157

Source: Malawi Integrated Household Survey, 1997-98

Table 34 -Reasons for Migrating Into Survey Area by District

	own employ- ment	spouse's employ- ment	marriage	school	drought	war	seeking land	seeking work	other	Total
Malawi	12.9	12.0	33.4	5.1	.3	.3	11.7	7.7	16.5	100.0
Northern Region	17.4	14.6	30.0	10.1	.2		8.9	7.0	11.7	100.0
mzimba	16.0	14.2	47.6	3.6			6.2	2.7	9.8	100.0
mzuzu city	22.5	20.0	9.7	17.9	.5		3.6	8.2	17.6	100.0
nkhata-bay	18.5	13.4	23.3	9.7	.3		11.4	13.1	10.5	100.0
rumphu	8.6	5.7	34.3				28.6	20.0	2.9	100.0
karonga	13.0	7.6	16.3	29.3	1.1		13.0	10.9	8.7	100.0
chitipa	10.9	9.4	36.7	7.0			25.0	1.6	9.4	100.0
Central Region	9.7	12.0	37.0	3.7	.3	.2	11.3	7.7	18.2	100.0
ntcheu	8.8	12.4	33.2	4.7			33.2	2.1	5.7	100.0
dedza	10.7	3.9	32.6	1.9			3.9	1.2	45.8	100.0
salima	6.4	3.2	30.0	5.5	.3		36.4	2.6	15.5	100.0
lilongwe rural	5.1	7.1	56.0	2.6	.8		7.3	7.9	13.2	100.0
lilongwe city	28.3	21.6	12.6	10.1		.3	.8	17.0	9.3	100.0
mchinji	12.8	28.5	26.6	2.6		.1	7.2	7.7	14.5	100.0
kasungu	2.5	13.1	31.6	1.5	.4	.1	17.2	11.9	21.7	100.0
dowa	6.0	4.1	54.6	4.5	.2	.4	8.0	2.9	19.3	100.0
ntchisi	4.5	7.8	57.8				5.2	5.8	18.8	100.0
nkhota-kota	7.7	.6	37.0	2.2		1.1	29.3	5.0	17.1	100.0
Southern Region	15.7	10.8	29.4	4.6	.5	.8	13.7	8.0	16.4	100.0
nsanje	12.3	10.3	27.7	1.9	3.9	1.9	21.3	11.6	9.0	100.0
chikwawa	25.1	9.4	21.6	.6	1.2	4.7	28.1	2.9	6.4	100.0
mwanza	23.8	14.3	38.1	4.8		4.8	14.3			100.0
blantyre rural	12.6	5.3	28.7	.4			17.4	2.4	33.2	100.0
blantyre city	23.0	11.1	23.2	10.3	.4		7.9	13.3	10.7	100.0
zomba rural	4.8	3.3	48.2	2.1	.2	.2	22.7	5.0	13.4	100.0
zomba municipality	22.4	11.5	5.4	4.2		.5	2.0	7.1	46.9	100.0
thyolo	29.9	1.3	45.2	7.0	.6	.6	5.7	3.8	5.7	100.0
mulanje	4.1	22.4	33.5	3.5			13.5	20.0	2.9	100.0
phalombe	13.3	18.2	55.9	2.8	1.4	.7	4.9	1.4	1.4	100.0
machinga	5.8	15.1	30.8	1.2	.6		24.4	12.8	9.3	100.0
mangochi	19.0	17.0	20.0	8.6		1.8	14.1	8.4	11.1	100.0
chiradzulu	5.7	7.8	47.9	2.1			13.0	4.7	18.8	100.0
Rural	10.1	11.0	38.4	3.7	.4	.4	13.7	6.6	15.9	100.0
Urban	24.5	16.5	13.2	10.6	.2	.2	3.5	12.1	19.3	100.0

Note: Figures computed only from valid responses of those 16 years old or older.

Source: Malawi Integrated Household Survey, 1997-98.

Table 35-Origin of Immigrants by District

	village	town	abroad	Not reported	Total
Malawi	65.8	24.7	8.1	1.4	100.0
Northern Region	58.5	30.4	10.2	.9	100.0
mzimba	67.0	22.1	10.2	.7	100.0
mzuzu city	42.0	45.9	9.9	2.2	100.0
nkhata-bay	64.0	33.3	2.8		100.0
rumphu	25.6	41.9	30.2	2.3	100.0
karonga	48.1	17.9	34.0		100.0
chitipa	78.3	11.8	9.9		100.0
Central Region	70.3	21.6	7.4	.8	100.0
ntcheu	45.2	48.5	2.1	4.2	100.0
dedza	61.7	37.5	.5	.3	100.0
salima	81.1	17.6	1.3		100.0
lilongwe rural	80.4	10.1	9.5	.1	100.0
lilongwe city	58.0	23.8	17.9	.3	100.0
mchinji	88.5	8.8	2.1	.6	100.0
kasungu	55.7	36.7	5.4	2.2	100.0
dowa	60.3	18.5	20.2	1.1	100.0
ntchisi	92.3	7.7			100.0
nkhota-kota	78.8	19.9	.4	.9	100.0
Southern Region	62.6	26.7	8.1	2.6	100.0
nsanje	71.7	20.6	2.2	5.6	100.0
chikwawa	41.8	28.4	22.6	7.2	100.0
mwanza	72.7	18.2	9.1		100.0
blantyre rural	59.6	36.1	3.6	.7	100.0
blantyre city	46.2	39.0	12.0	2.7	100.0
zomba rural	64.8	24.5	7.6	3.2	100.0
zomba municipality	61.4	32.0	4.8	1.7	100.0
thyolo	73.7	9.7	11.8	4.8	100.0
mulanje	64.4	30.9	3.7	1.1	100.0
phalombe	86.3	13.7			100.0
machinga	63.3	23.6	12.6	.5	100.0
mangochi	68.9	20.4	9.0	1.6	100.0
chiradzulu	74.2	16.7	4.3	4.7	100.0
Rural	69.2	22.2	7.2	1.3	100.0
Urban	52.4	34.4	11.6	1.7	100.0

Source: Malawi Integrated Household Survey, 1997-98.

